



Healthy Streets, Healthy Travel, Healthy Lives

Delivering Healthy Streets in Camden

Healthy Streets Scorecard Event | July 2025

Agenda

1. What have we done, and what is the outcome?
2. How have we done it?
3. What's next – the 2025/28 Delivery Plan
4. Reflections

1. What have we done, and what is the outcome?

Outputs since 2019 (CTS adoption)

Trebling length of segregated cycleways from circa 8km in 2019 to 24km (2024)

Increased the number of Healthy School Streets **from 4 in 2019 to 36 (2024)**

Increased the number of “point closures” to through traffic **by over 45%**, from 85(2019) to 125 (2024)

More than **quadrupled cycle hangar provision** from 2019 to 2024

Quadrupling in numbers of EVCPs from 2019 to 2024

Doubling in number of cycle permeability schemes (e.g. one way streets to two way for cycling) since 2018

Outcomes since 2019 (CTS adoption)

Motor traffic volumes have **decreased by 11%** on Camden’s streets between 2019 and 2024, and by **33% since 2006**

Number of cars owned in the Borough has dropped by **22% since 2016** – the largest reduction in London

Walking mode share has increased from 42% of all trips by Camden residents in 2017, to **52% in 2024**

NOx emissions from road transport have **dropped by 73%** in Camden since 2013

Cycle mode share has also increased, reaching **around 5% in 2024** of all Camden resident trips



Drake Street/Procter Street cycle track and new planting areas



York Way permanent scheme under construction (Autumn '24)



Gordon Square – pedestrianisation scheme (summer '24)



Clarkson Row urban greening



Clarkson Row/ Mornington Place



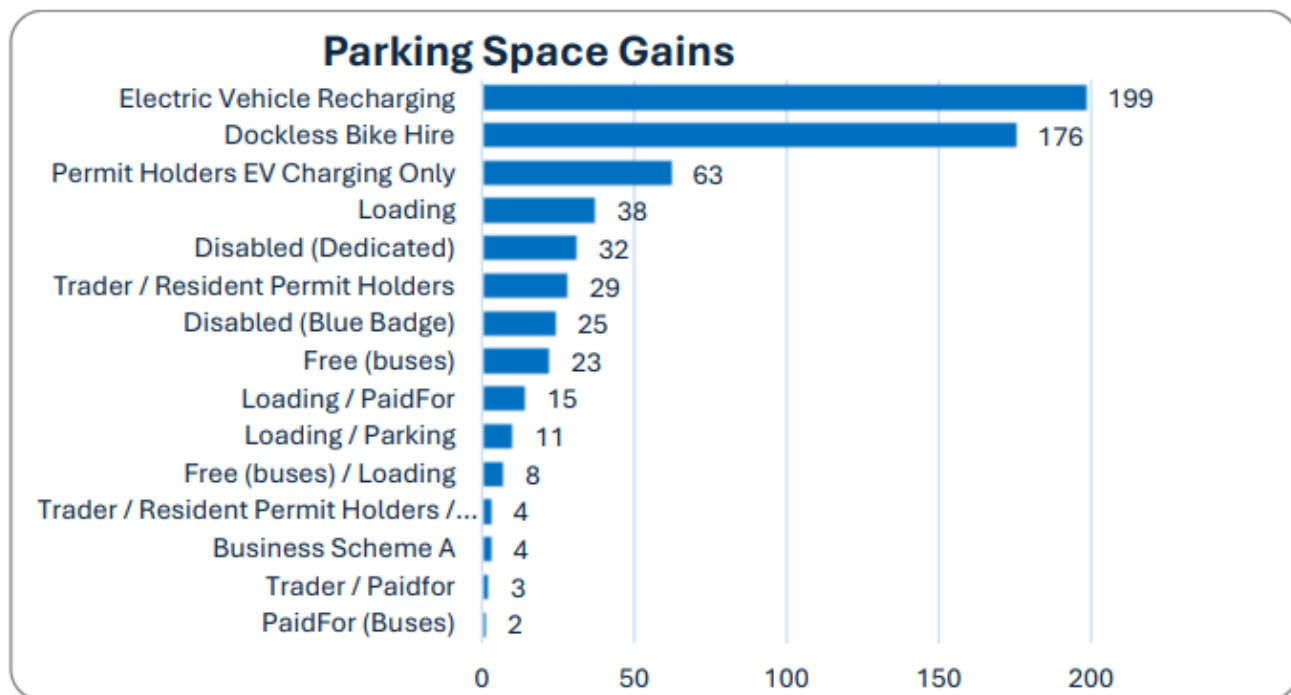
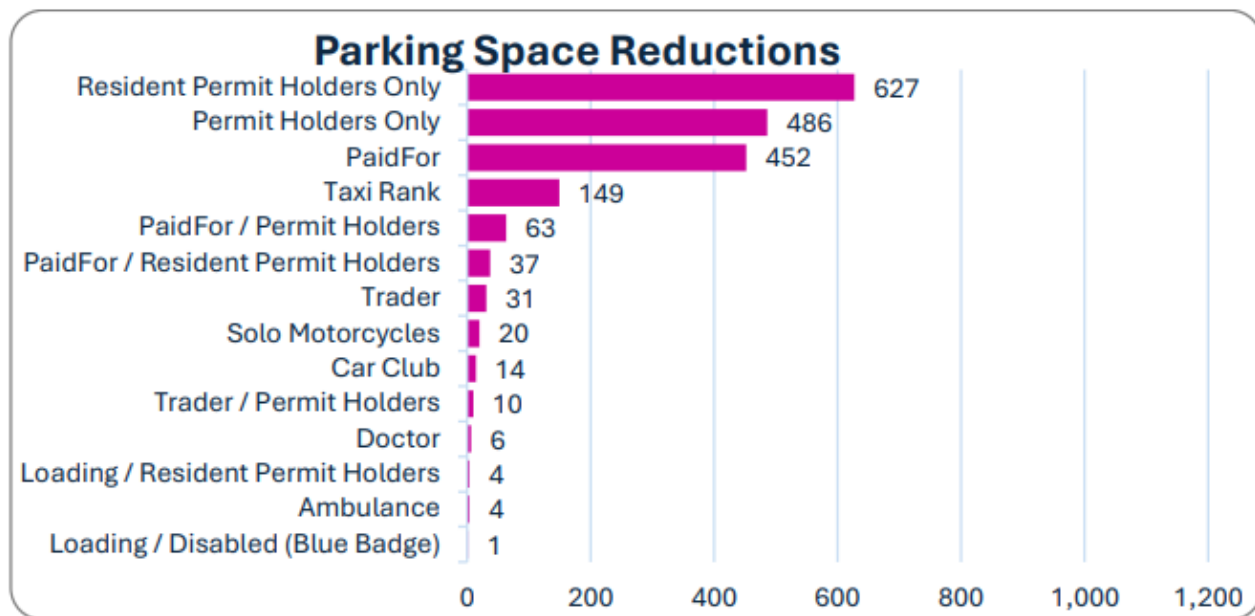
Phoenix Road - before



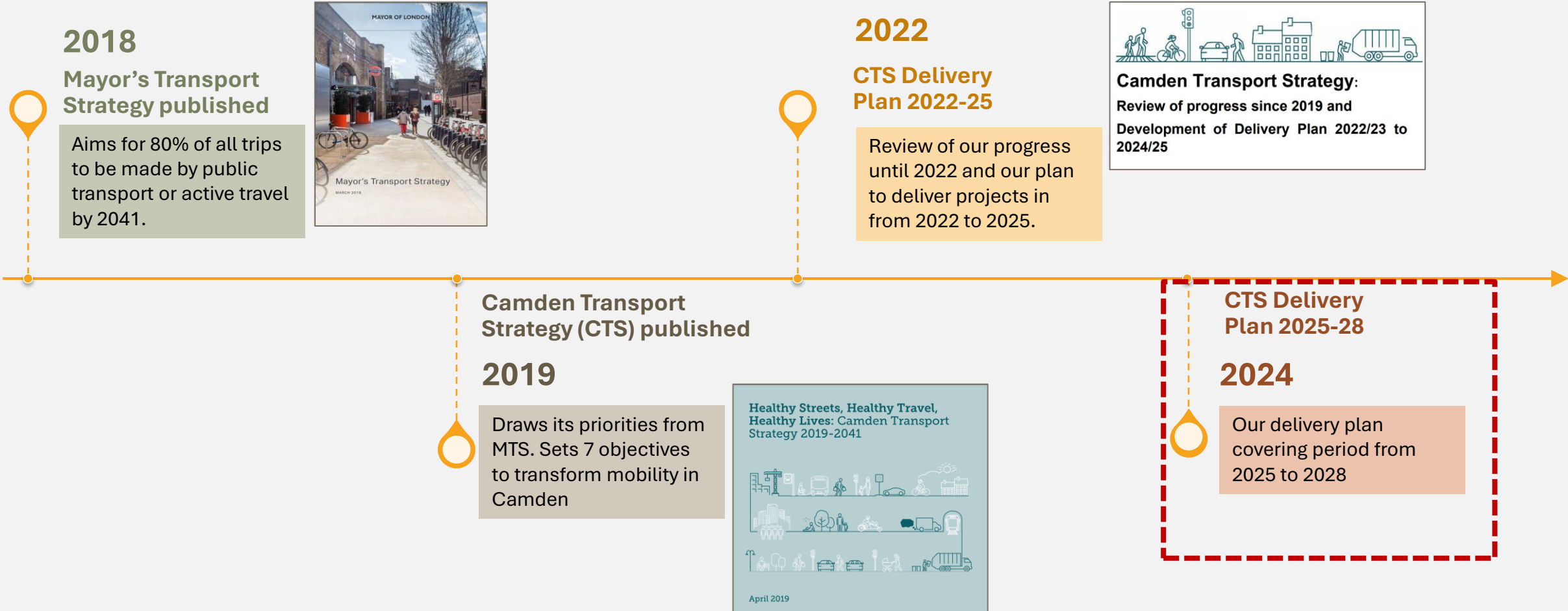
Phoenix Road – trial scheme

2. How have we done it?

Figure 2: Changes to parking spaces in Camden since 2019

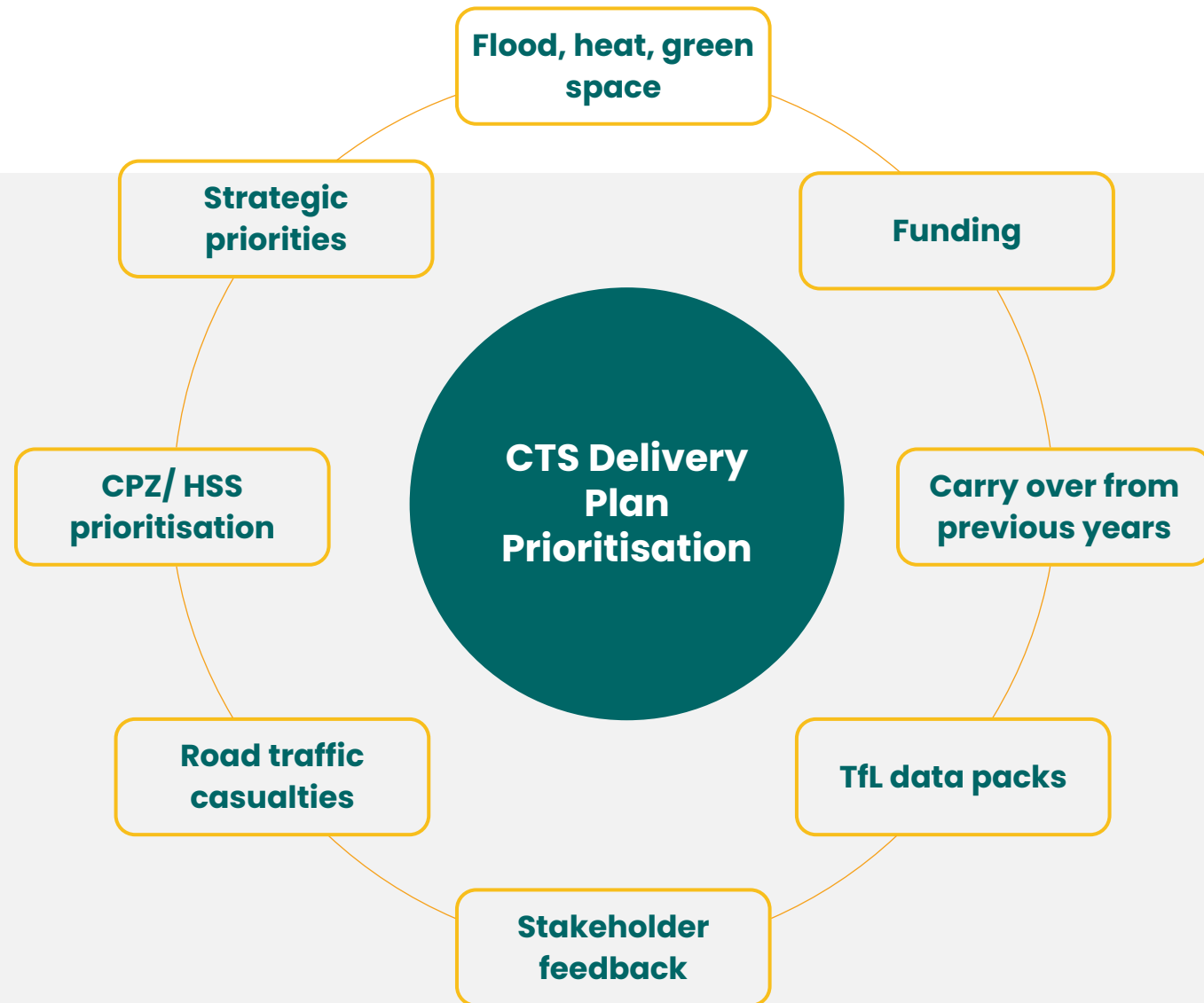


3. What's next – the CTS Delivery Plan 2025 to 2028

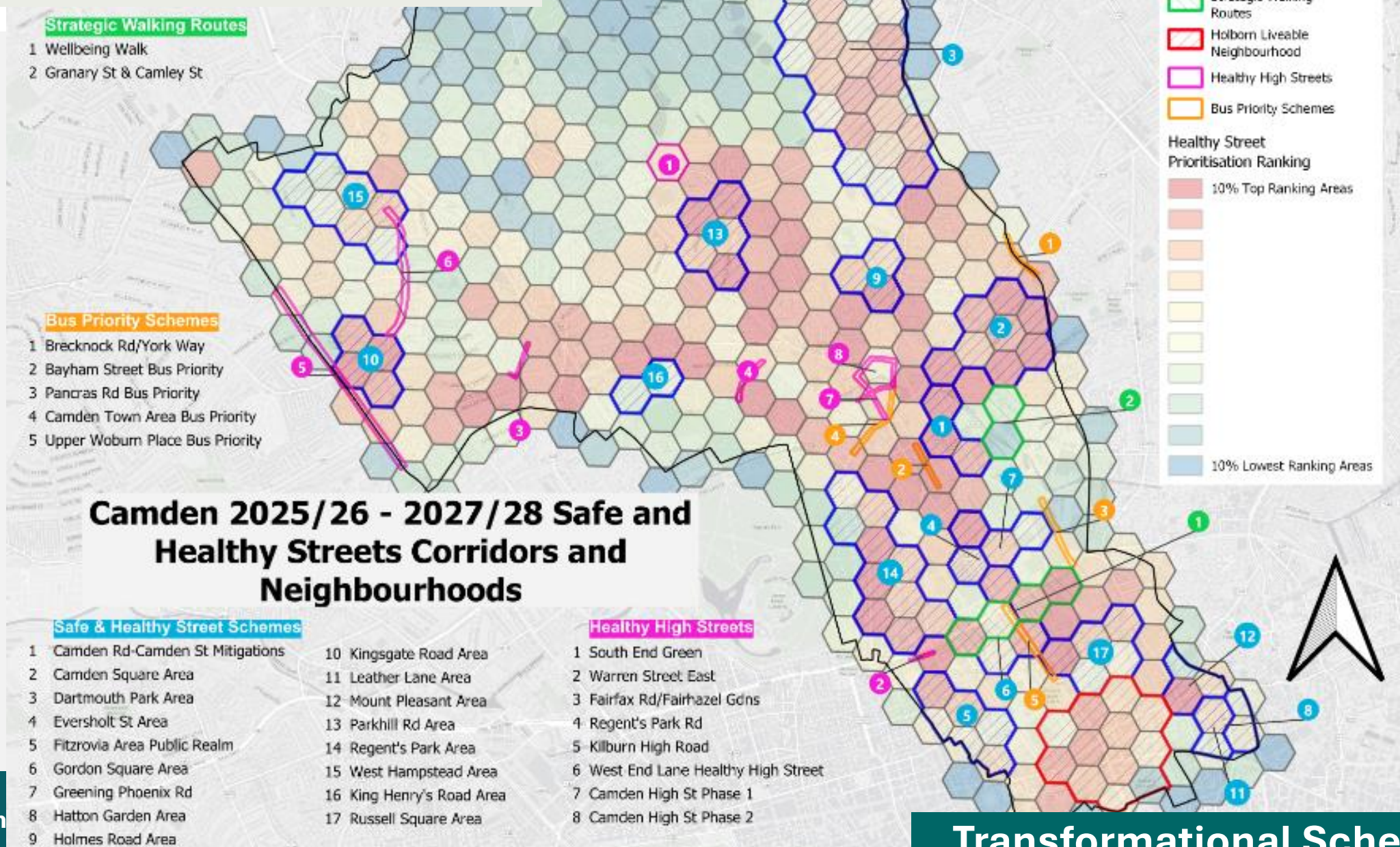


How we identify programmes and projects

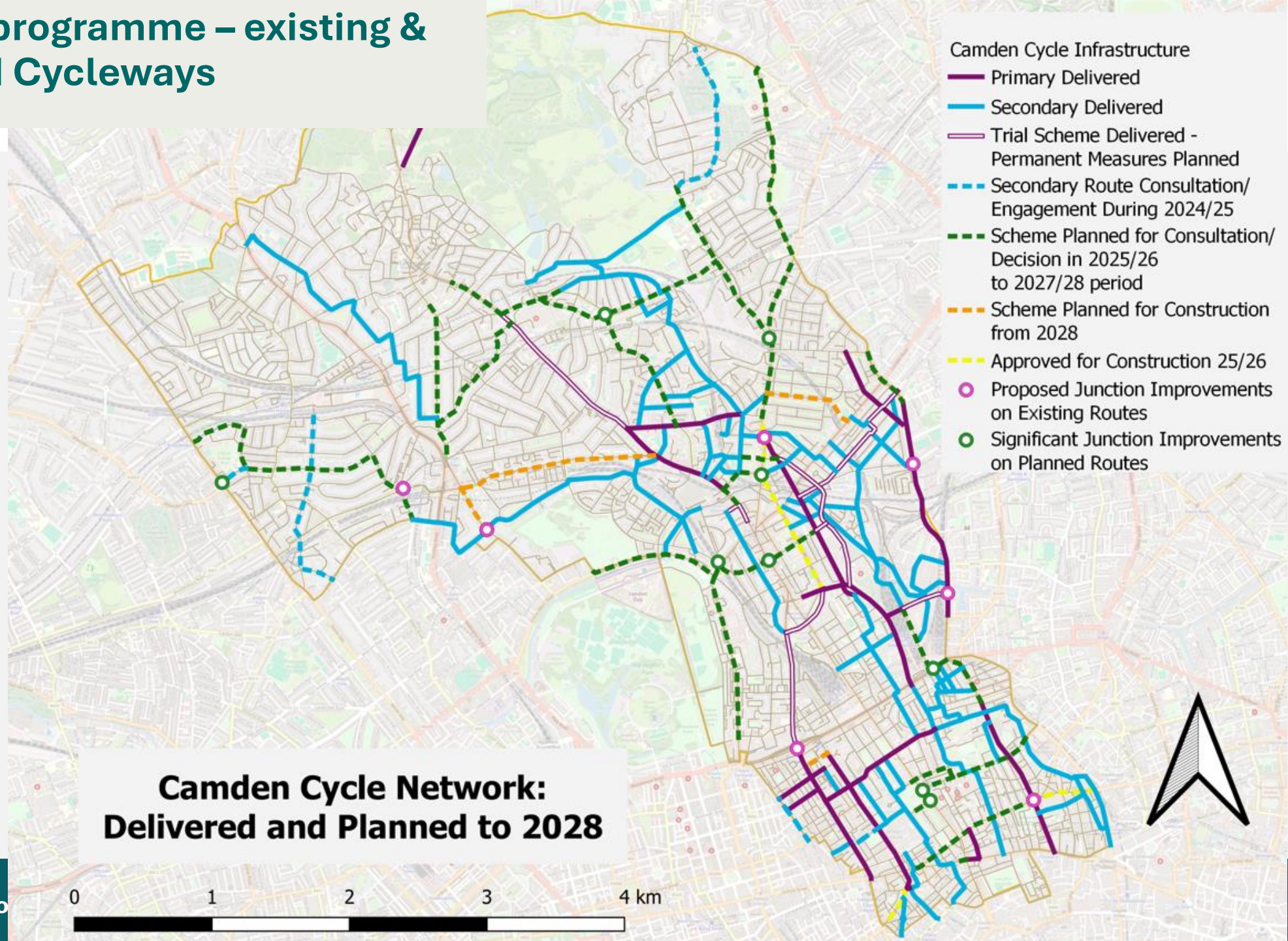
- What can help us achieve our **policy/ strategic priorities**
- What is **unfinished** from previous years
- What **data** tells us
- What **stakeholders** tell us
- What can we **feasibly implement**



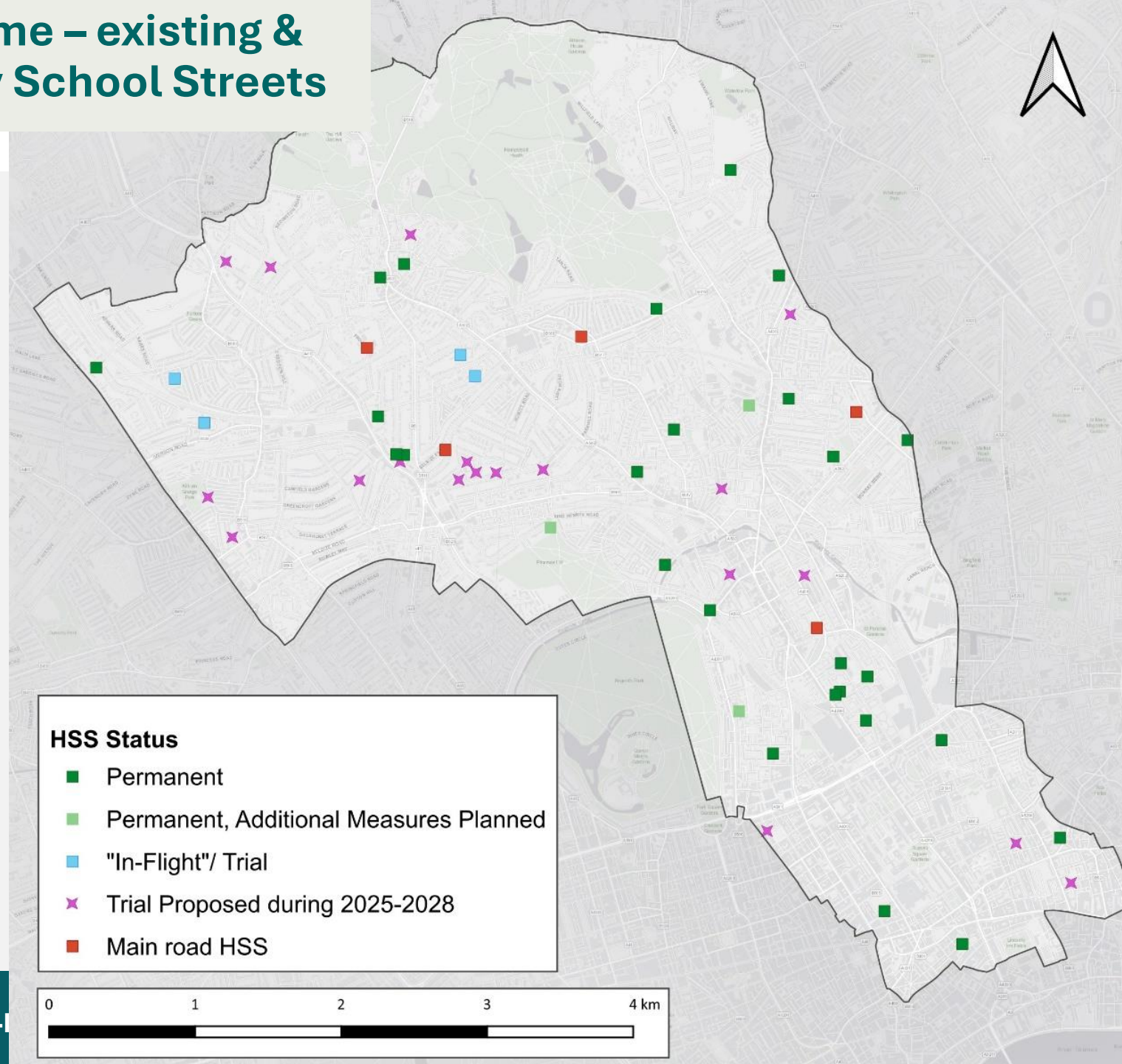
25-28 Delivery Plan – corridor/ neighbourhood schemes



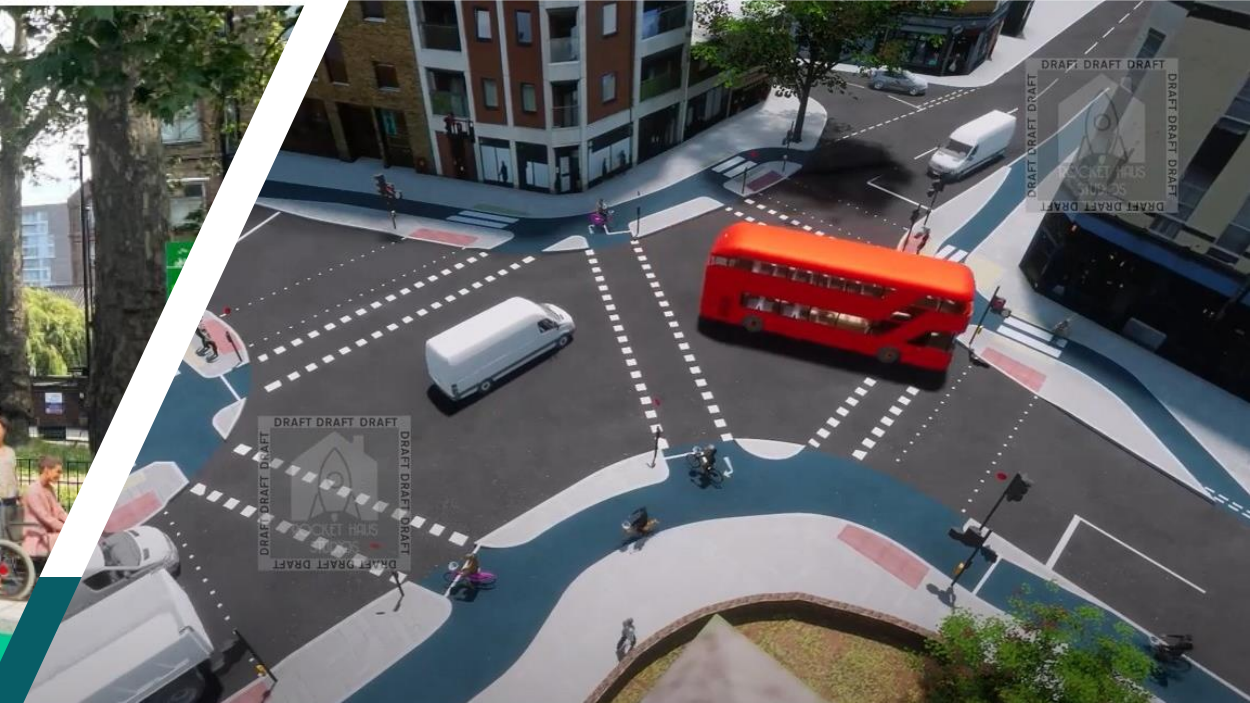
The new programme – existing & proposed Cycleways



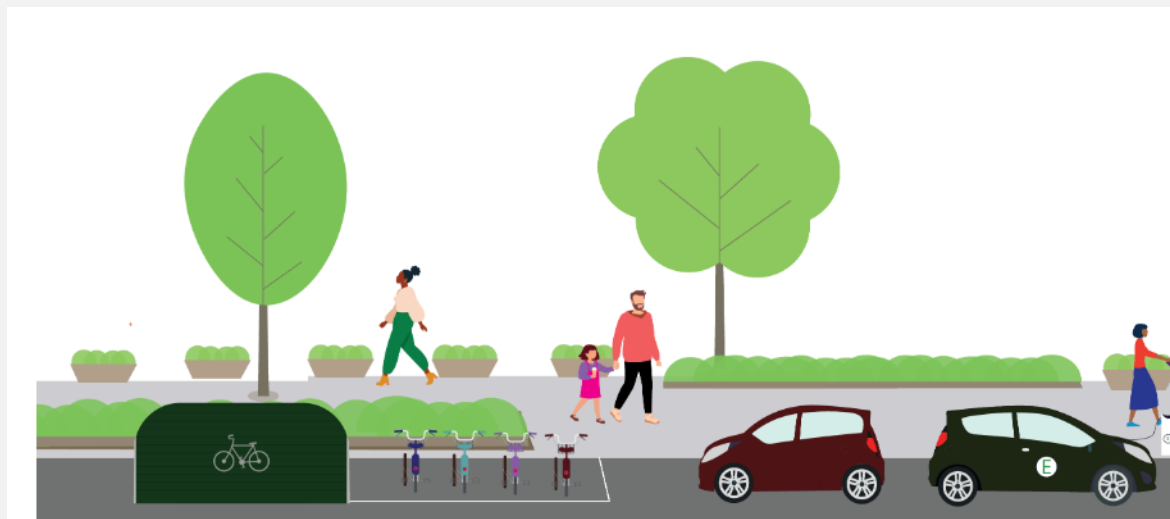
The new programme – existing & proposed Healthy School Streets



*the road closure, and the creation of
pocket park at Messina Ave*

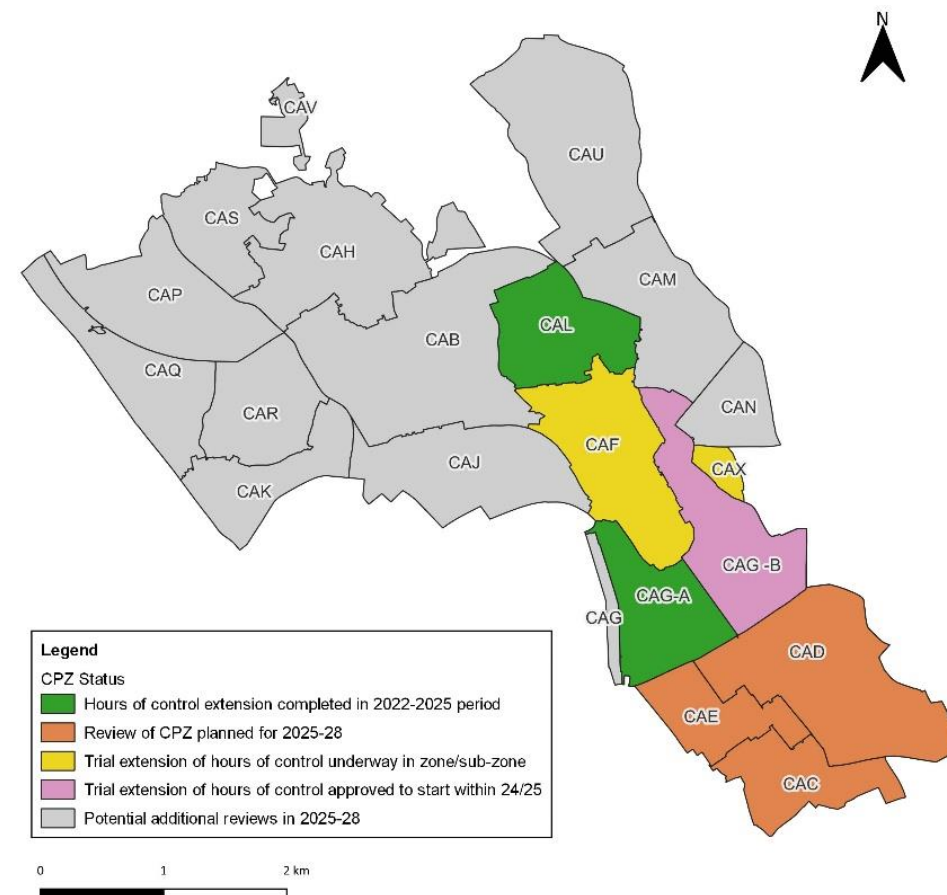


Parking Policies and Projects



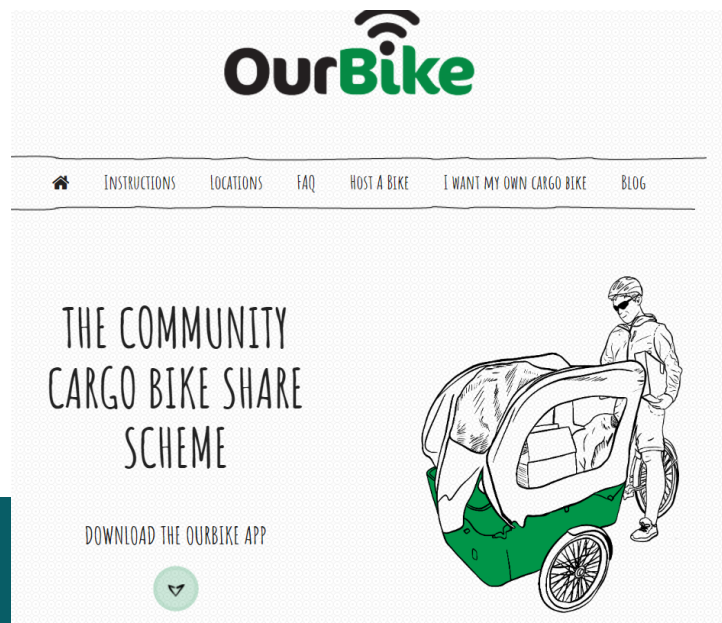
Healthy Streets, Healthy Travel: Cleaner, Fairer Parking

Continuing to review our parking fees and charges



Controlled Parking Zone Reviews

HEALTHY TRAVEL CHOICES



OurBike | Hire a community cargo bike



Free cycle skills and training courses



Swap your Parking permit for free car club membership



Try a bike – huge discounts off bike rental



Borrow a Brompton



Pedal Your Parcel | grants for businesses to buy a cargo bike

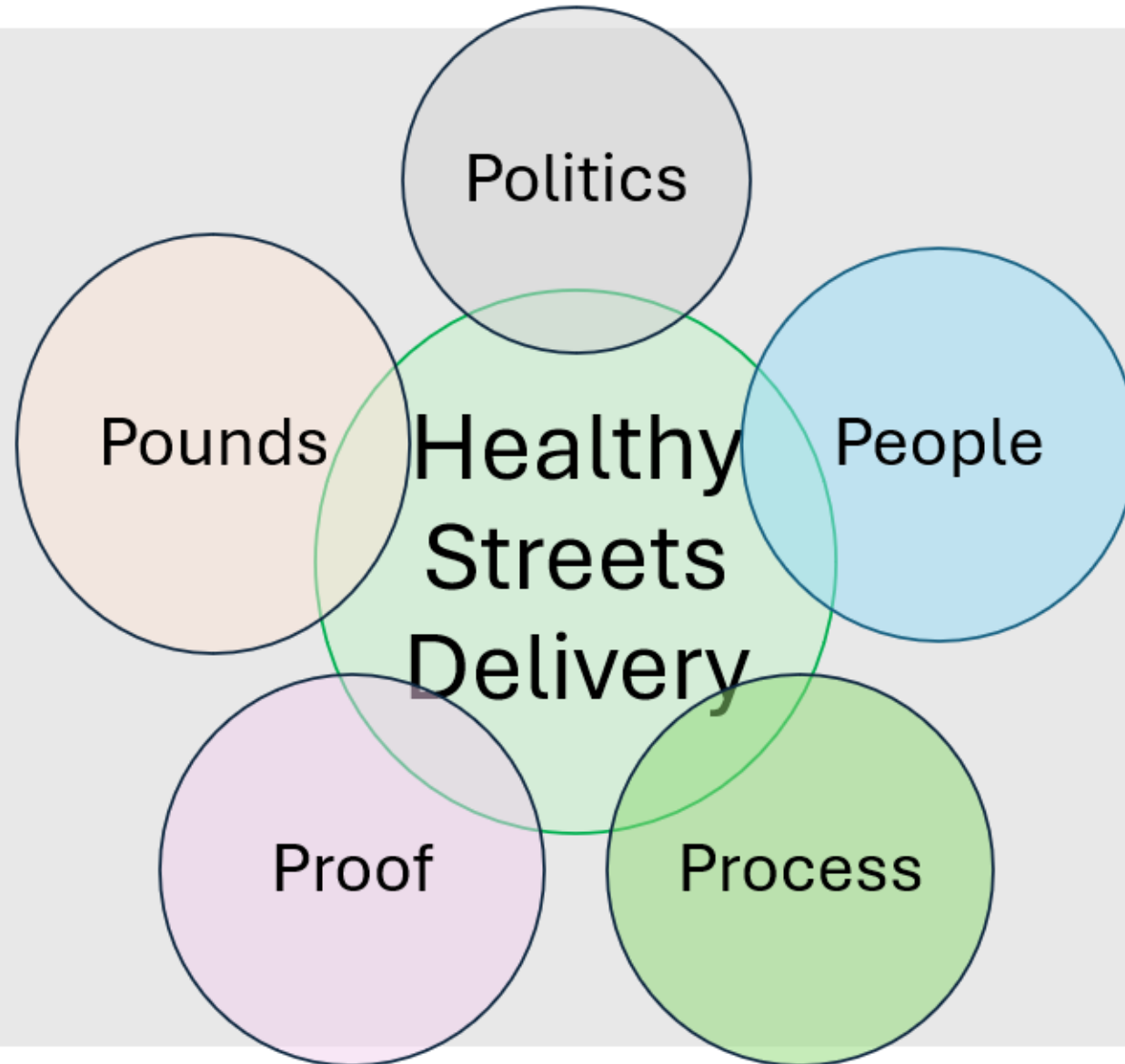


£22m of Council capital funding support...

Programme	Council Capital Funding Requests				Overall Scheme Cost*
	25/26 (£)	26/27 (£)	27/28 (£)	3yr Total (£)	
CTS Delivery Plan – Healthy Streets (25/26 to 27/28)	£4m	£4m	£4m	£12m	£39m (<u>3yr total</u>)
Holborn Liveable Neighbourhood project (25/26 to 27/28)	£1m	£2m	£3m	£6m	£40m(<u>total</u>)
Kilburn High Road (25/26 to 27/28)	£0.5m	£1.5m	£2m	£4m	£12m (<u>total</u>)
Total requested funds	£5.5m	£7.5m	£9m	£22m	£91m



4. Reflections



CONTACT DETAILS/FURTHER INFORMATION

- General queries:
safetravel@camden.gov.uk
- And read more about our schemes here:
<https://safetravelcamden.commonplace.is/overview>
- The CTS and supporting documents, including 3 year plans, are here:
<https://www.camden.gov.uk/transport-strategies-and-plans>

Healthy Streets, Healthy Travel,
Healthy Lives: Camden Transport
Strategy 2019-2041

