



'Heritage Carparks' & Town Centre Placemaking

Amanda Reynolds

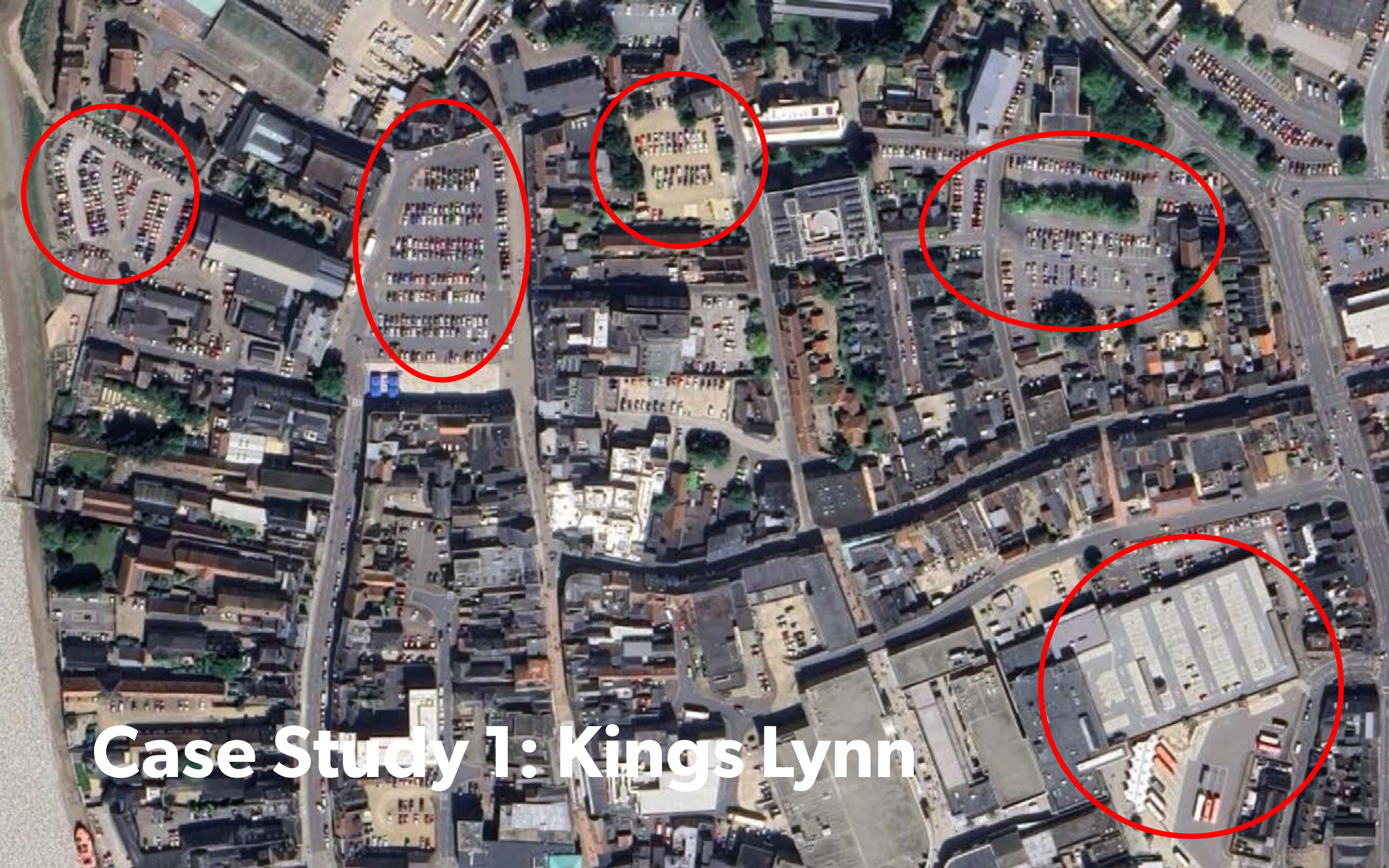
CPRE Webinar

19/03/2026

ARUrbanism

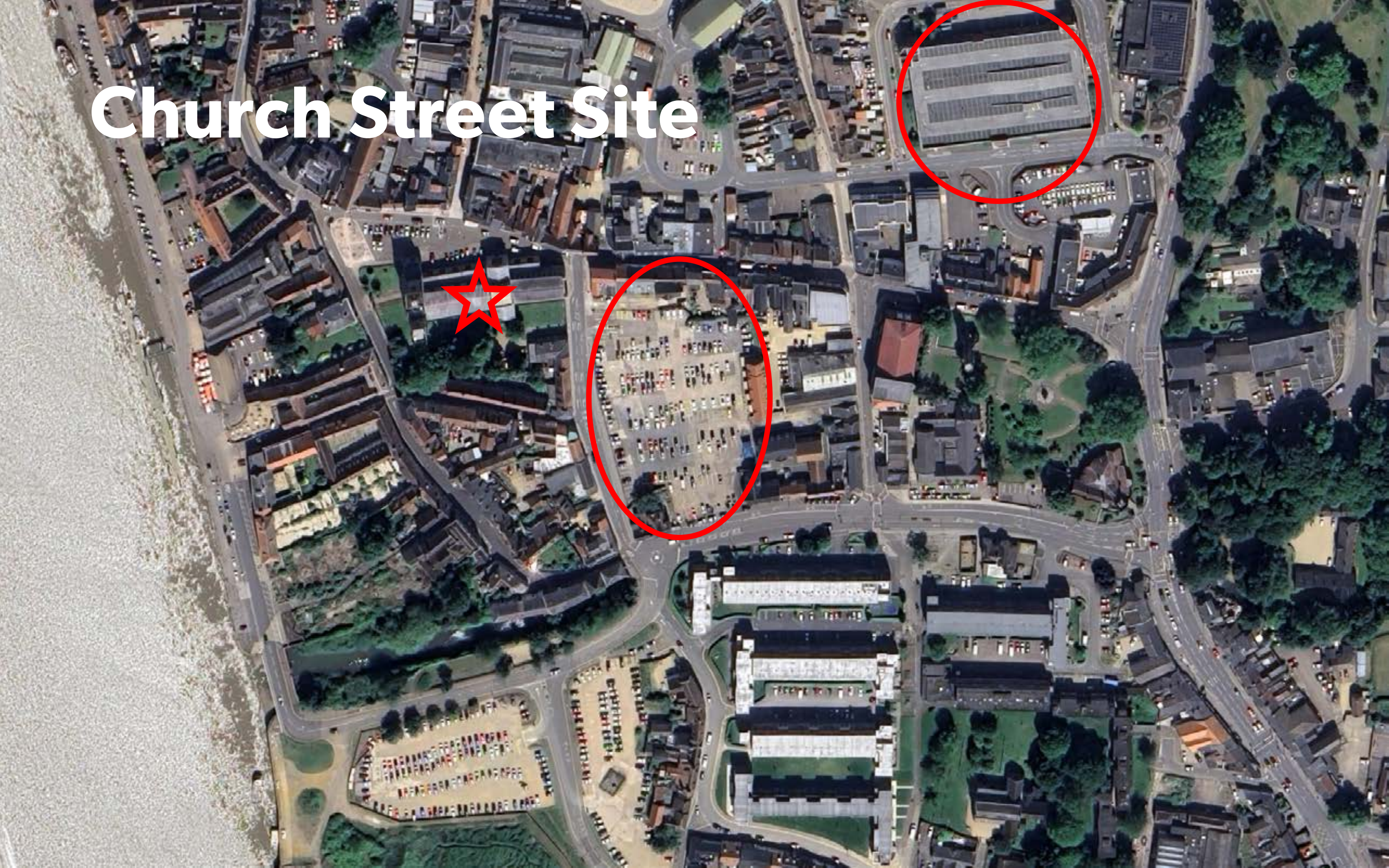
A street scene in a historic town. In the foreground, a large parking area is filled with cars, including a white van, a black SUV, and several white cars. The background features a row of historic buildings, including a prominent blue building with 'DUKE'S HEAD HOTEL' signage. The sky is overcast. The text 'Heritage Carparks?' is overlaid in large white font, followed by a detailed description of the parking areas.

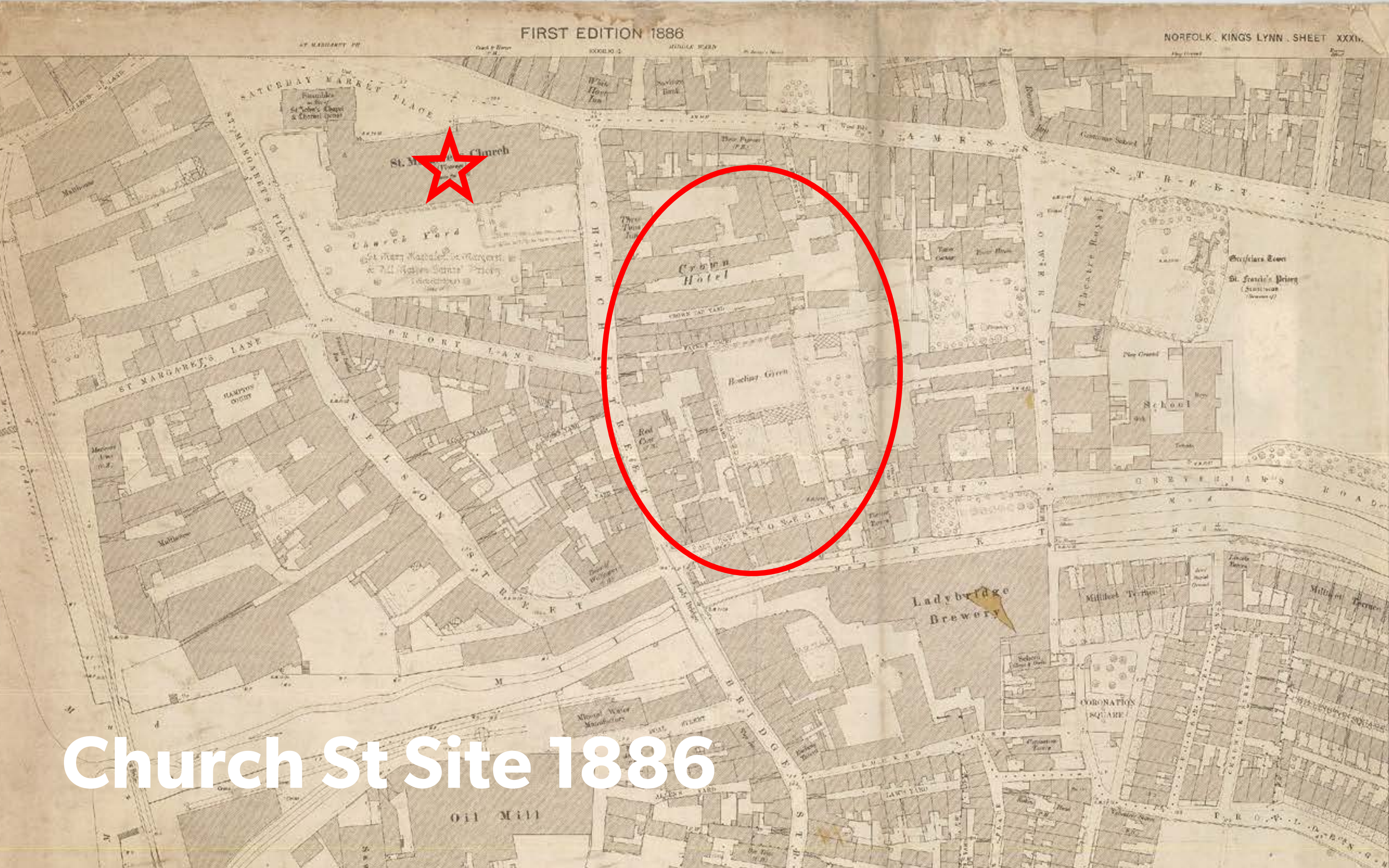
'Heritage Carparks'?
At-grade parking areas on
previously built-on cleared
sites or former/current
public squares



Case Study 1: Kings Lynn

Church Street Site





Church St Site 1886



Church St Site 2025

© 2021 Google

Case Study 2: Chichester



East Pallant Site 1875



East Pallant Site 2025



East Pallant Site 2025



How to transform Heritage Carparks ? Carrots and Sticks...

Sustainable
Environments



Connected
Community



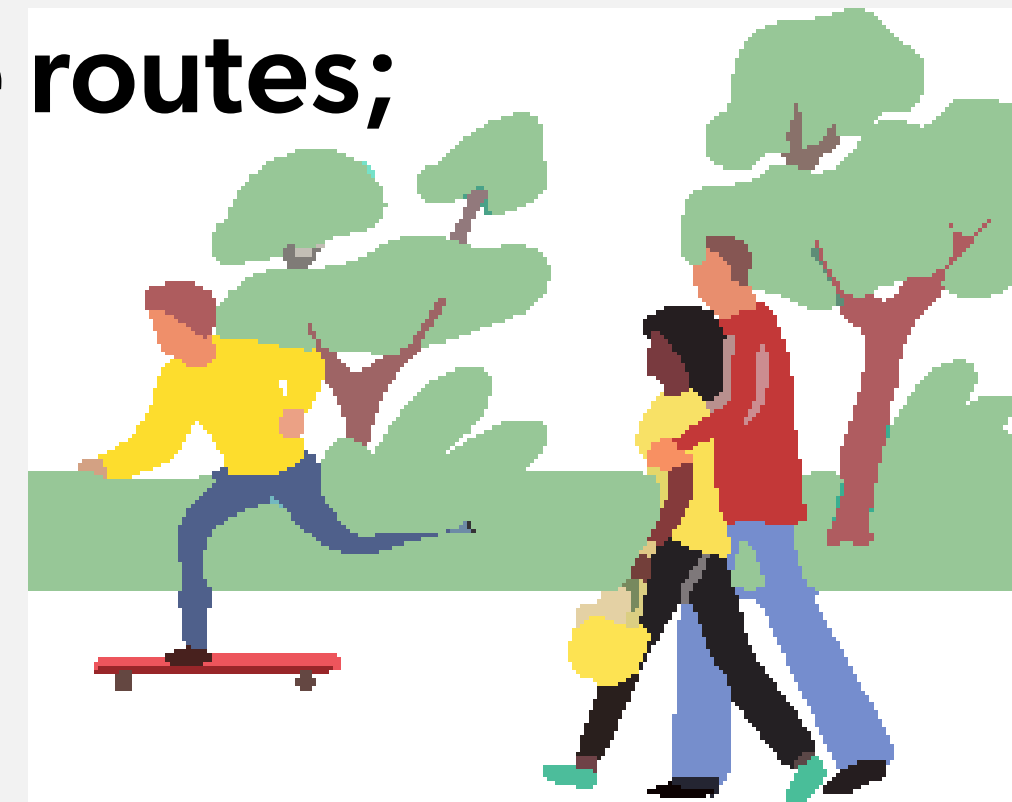
Inspiring
Places



Carrots:

Encourage use of active travel modes:

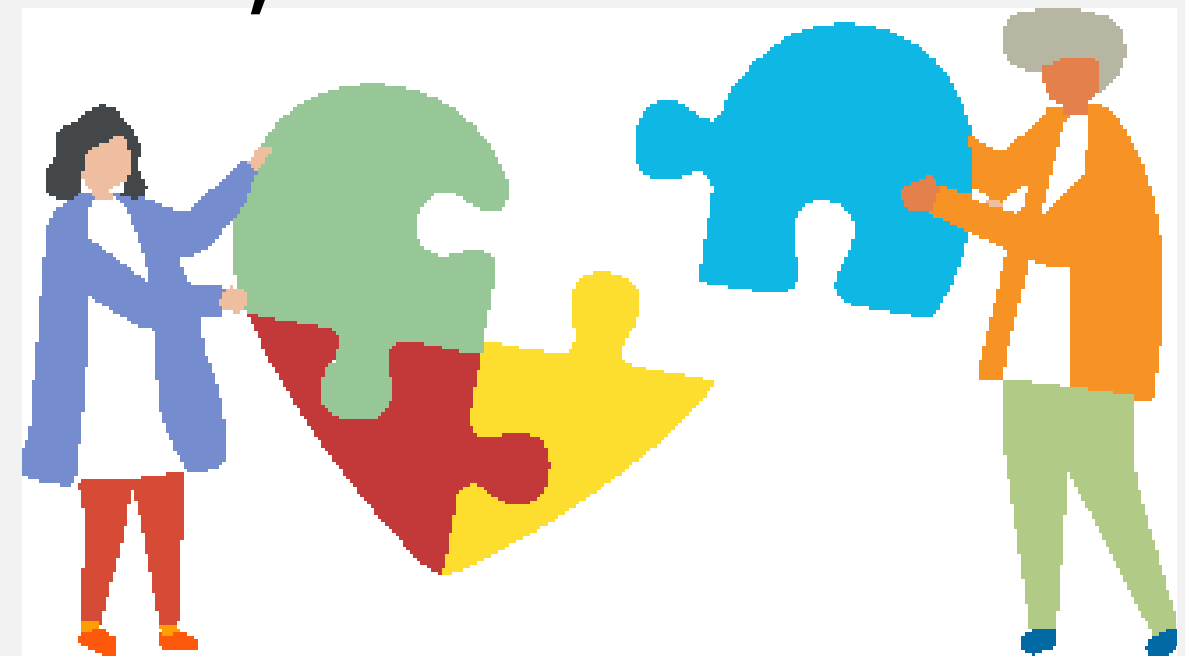
- **Safe, attractive, direct and well-signposted pedestrian routes;**
- **New and improved public spaces, green spaces;**
- **Improved Public Transport - bus stop locations and frequency;**
- **Safe, segregated and attractive cycle routes;**
- **Safe and secure cycle parking.**



Sticks: Rationalise, Reduce & Relocate

RATIONALISE parking management:

- Include some free time;
- Support the evening economy;
- Overnight spaces for residents;
- Long term parking more expensive;
- Short/medium term parking reasonable;
- Enforce parking controls.



Sticks: Rationalise, Reduce & Relocate

REDUCE parking numbers in town centres:

- Make other transport modes more attractive;
- Remove some parking spaces.

RELOCATE parking to edge locations/new structures:

- All-day parking to urban edges - walk or shuttle bus;
- Multi-storey carpark options to free up development land.



Results: Repair, Regenerate & Redevelop

REPAIR: Street patterns and new links

REGENERATE: public realm, streets and squares



Results: Repair, Regenerate & Redevelop

REDEVELOP: heritage carpark sites for:

- **Housing, including affordable, creating community and supporting local businesses;**
- **Mixed-use buildings for local enterprises;**
- **Low parking provision reflects accessibility;**
- **New parking to town edges or MSCPs.**





Case Study 1 Result:

Church St Site

**Heritage context
repaired, parking
reduced and
relocated;**

**New housing and
mixed-uses in town
centre context**

New public realm



Case Study 2 Result:

East Pallant & Other Sites

**Heritage context
repaired, parking
relocated;**

**New housing and
mixed-uses in town
centre context**

**Improved green and
public spaces**

Thank you!

ARUrbanism

