

# LONDON'S FRONT GARDENS

*- Now -*

*What we need and how we might get  
there*

Author: Rosie Whicheloe, September 2025



Increasing number of  
these types of front  
garden

A very small number of  
these types of front  
garden



Quite a few of these  
types of front gardens





Increasing number of  
these types of front  
garden

A very small number of  
these types of front  
garden



Quite a few of these  
types of front gardens

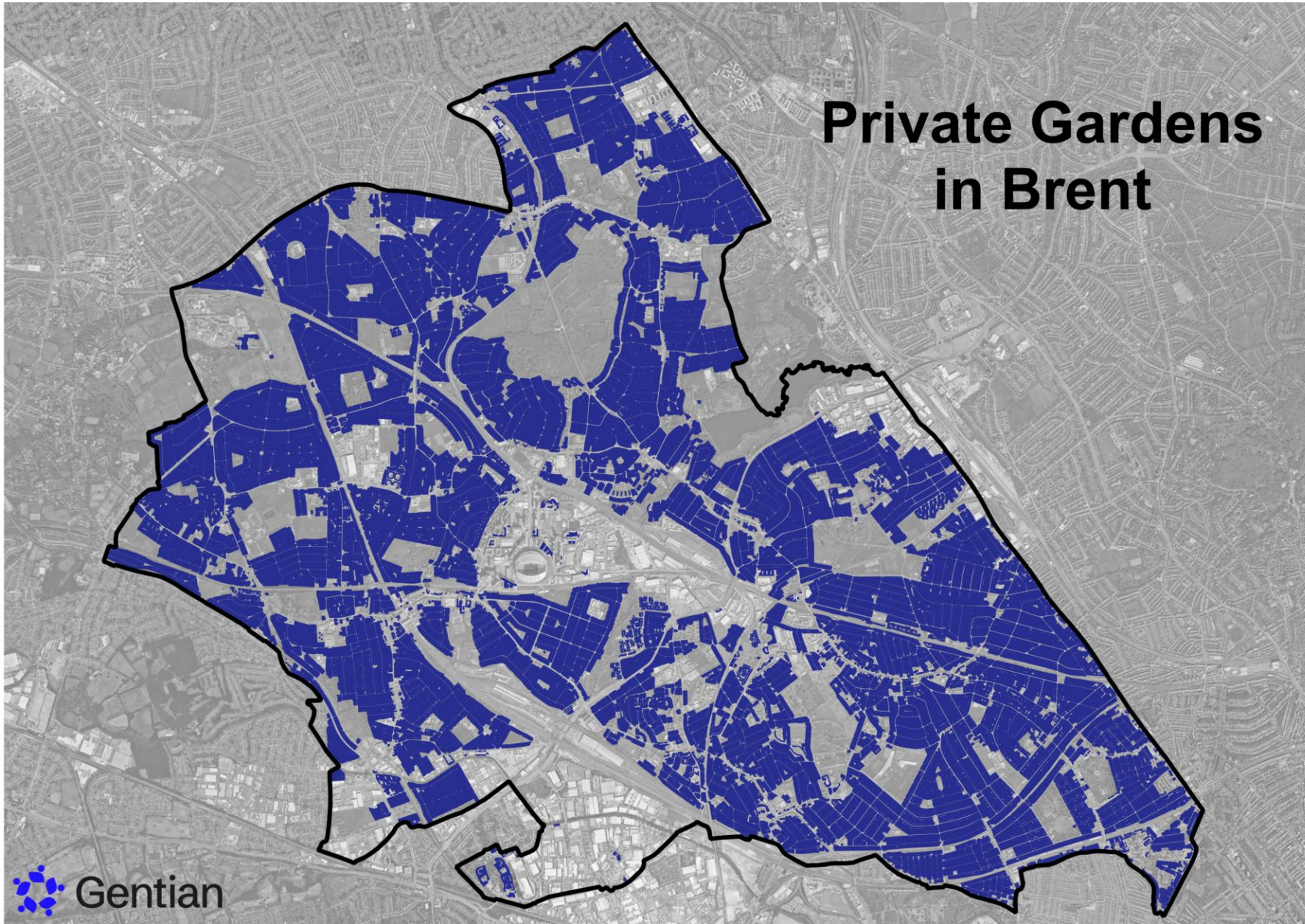


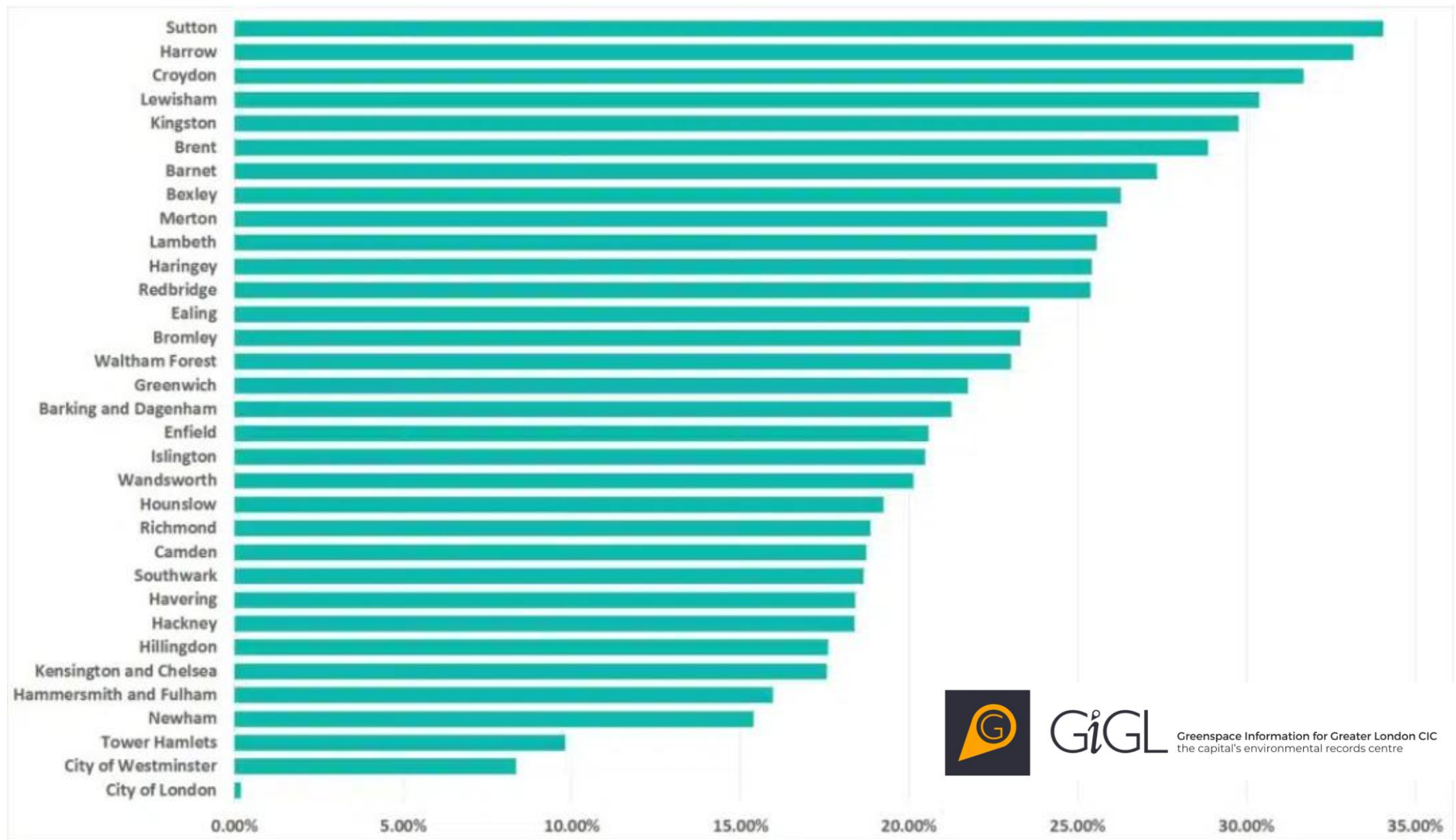
# What value resides between the Welsh Harp Reservoir and Fryent Country Park?





# Private Gardens in Brent



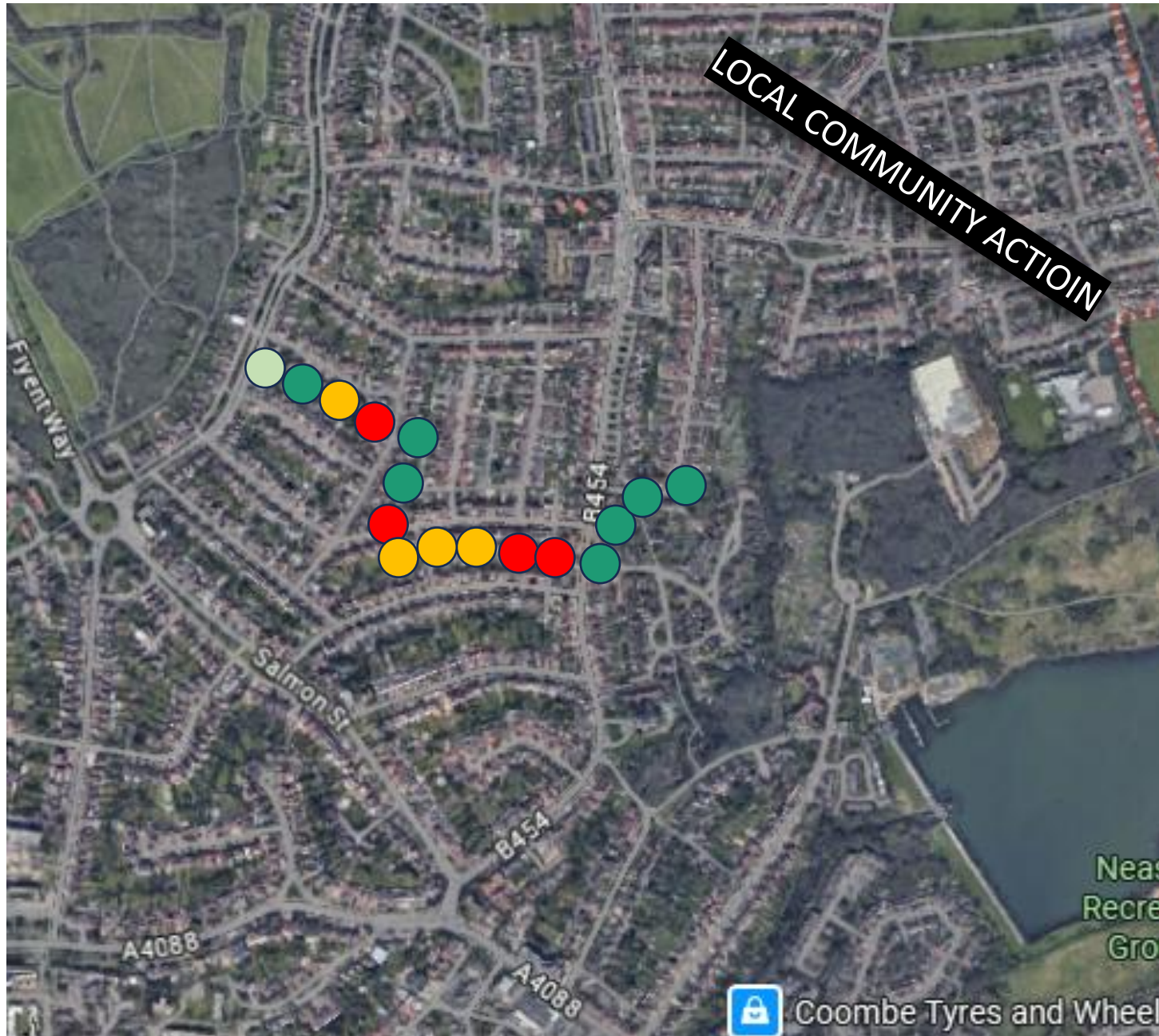


GiGL

Greenspace Information for Greater London CIC  
the capital's environmental records centre

Figure 1. Percentage of land that is garden cover for each London borough





## Proposed Methodology

## Hardstanding

1: 100% - 0

2: 50% - 1

3: 0-5% - 2

## Management

4: wild - 3

## 5: Maintained - 2

## 6: Manicured - 1

Native/pollinator

7: Yes - 1

8: No - 0

## Chemicals

9: Yes - 1

10: No - 0

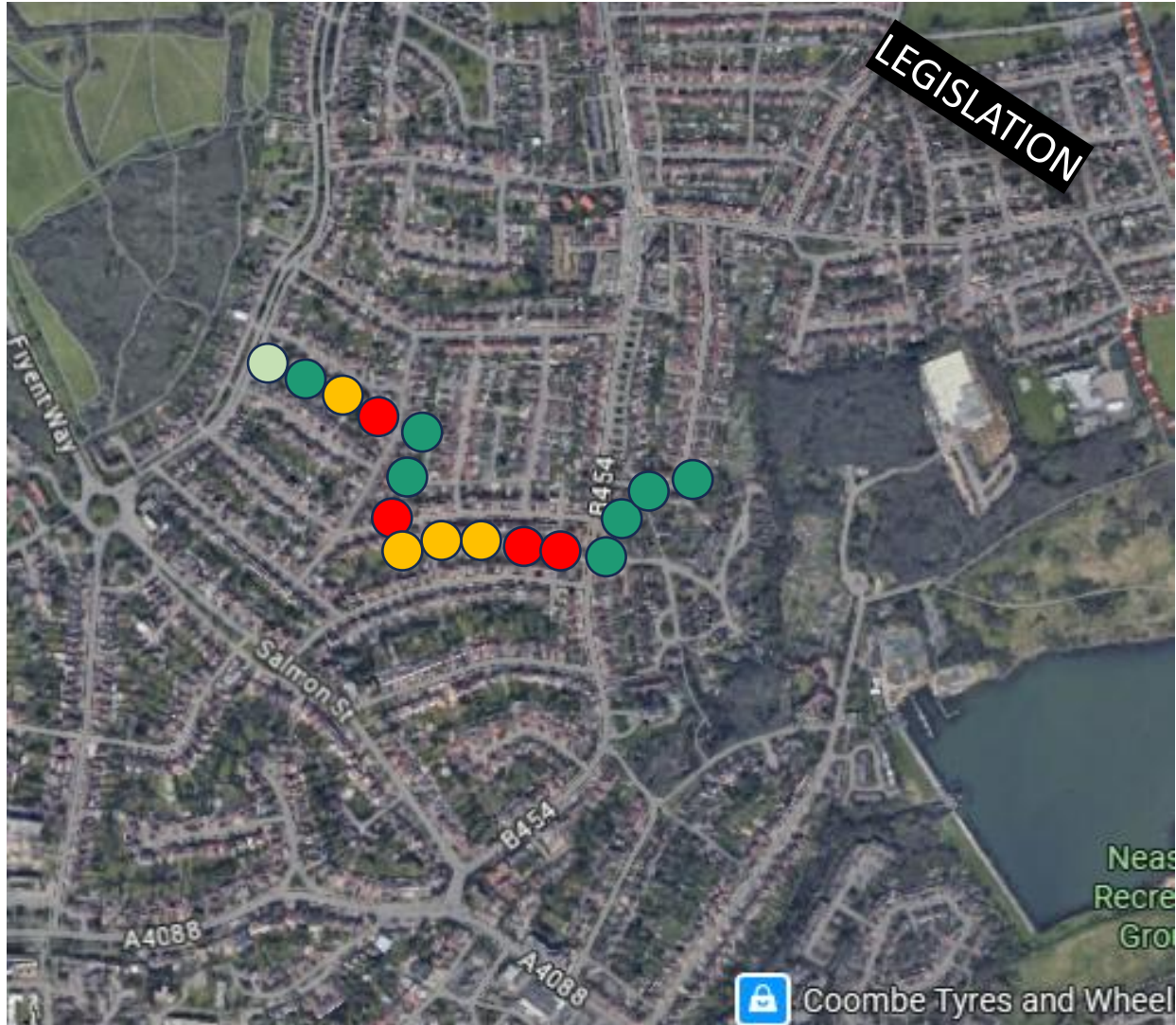
Highest value would be: 7

Lowest would be: 0

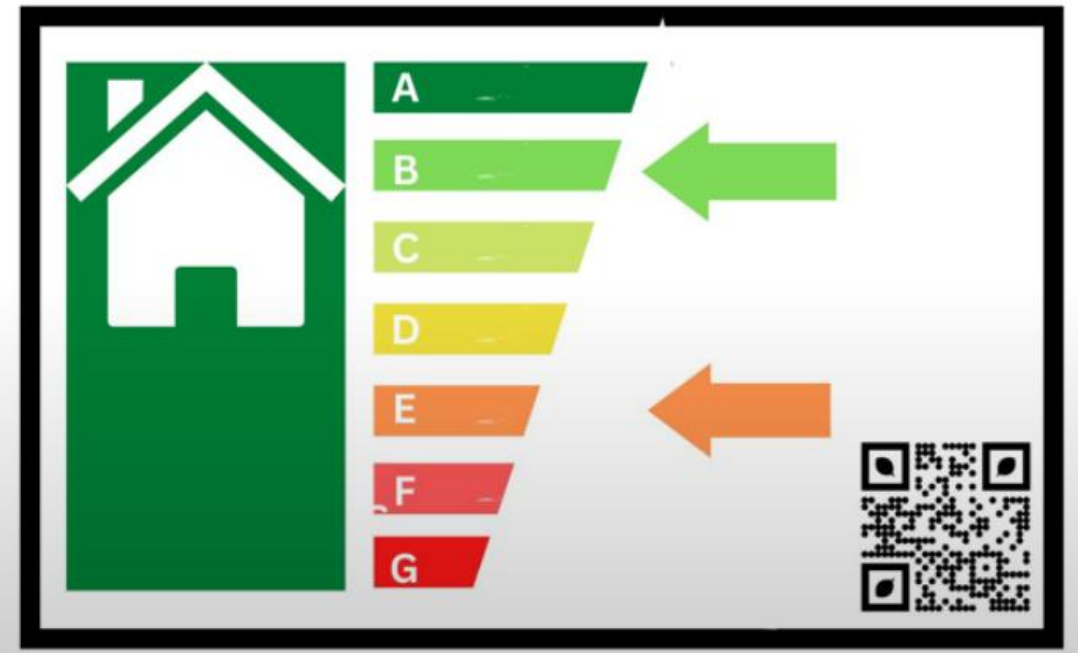




# A Biodiversity Performance Certificate (BPC)

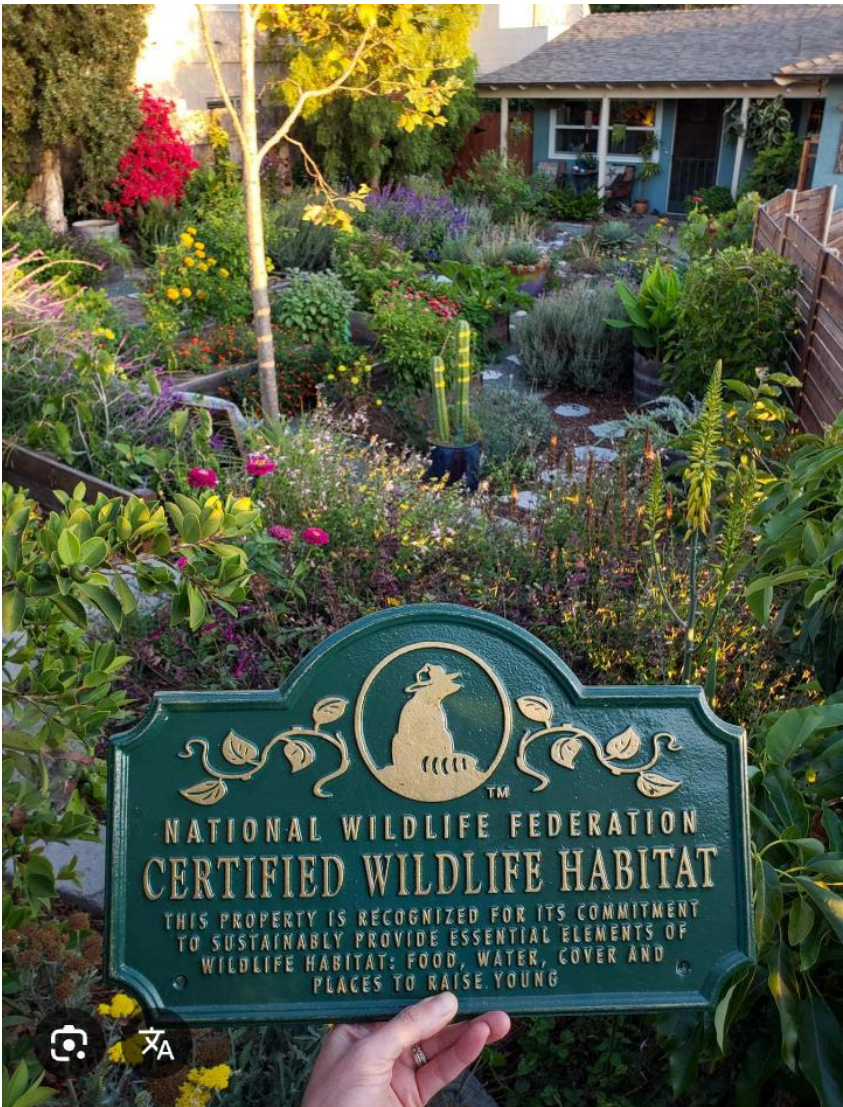


**DO YOU  
LIVE IN A  
HOUSE?**





# A “Garden” and “Neighbourhood Nature Reserve”





# A “Garden Protection Order” or “Listed Garden”



London's Smallest Listed Building?

Visit >



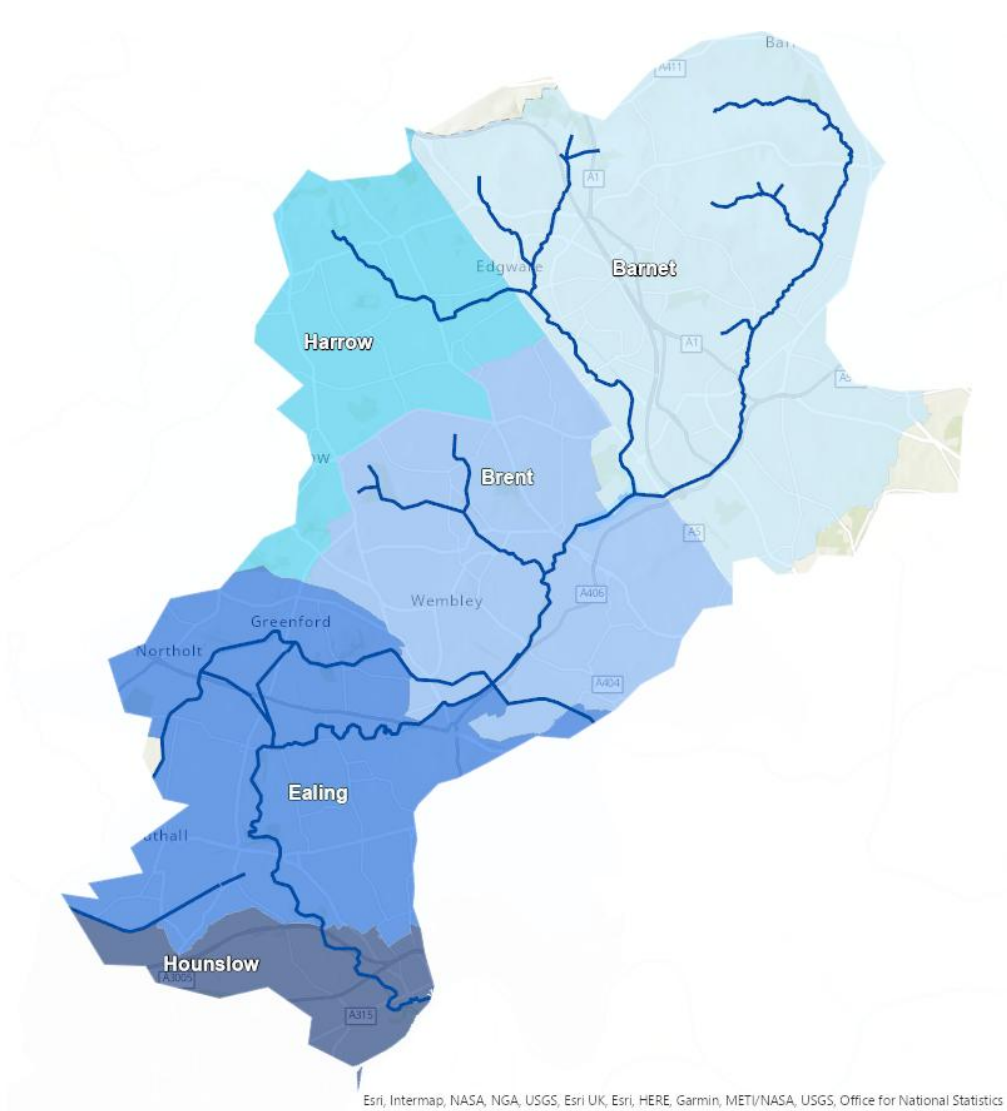
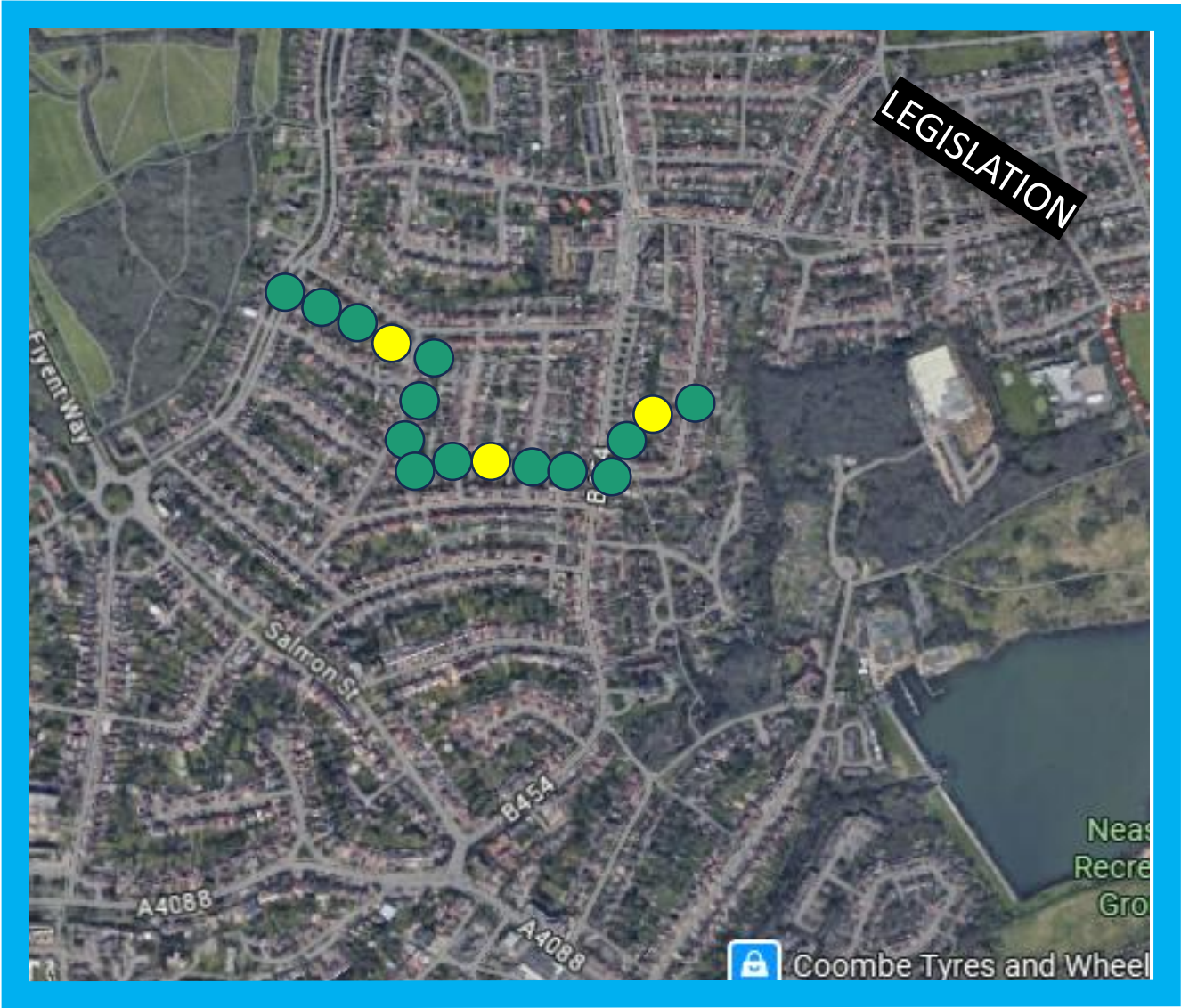


# A “Public House” and a “Health Service” linking plants and people





# Sentient Rights for Rivers (and their catchments)





# Thank you for listening

Author: Rosie Whicheloe, September 2025