

Traffic noise maps of public parks in Waltham Forest



May 2018

This document shows traffic noise maps for parks in the borough. The noise maps are taken from <http://www.extrium.co.uk/noiseviewer.html>. Occasionally, google earth or google map images are included to help the reader identify where the park is located.

Similar documents are available for all London Boroughs. These were created as part of research into the impact of traffic noise in London's parks. They should be read in conjunction with the main report and data analysis which are available at <http://www.cprelondon.org.uk/resources/item/2390-noiseinparks>.

The key to the traffic noise maps is shown here to the right. Orange denotes noise of 55 decibels (dB). Louder noises are denoted by reds and blues with dark blue showing the loudest. Where the maps appear with no colour and are just grey, this means there is no traffic noise of 55dB or above.

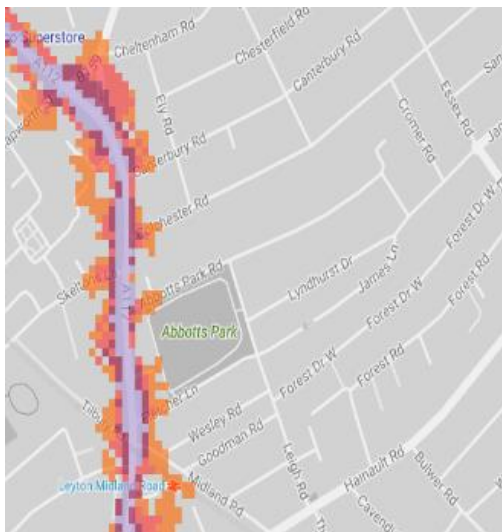
Average noise level (dB)

Blue	75.0 and over
Dark Blue	70.0 - 74.9
Red	65.0 - 69.9
Orange	60.0 - 64.9
Light Orange	55.0 - 59.9

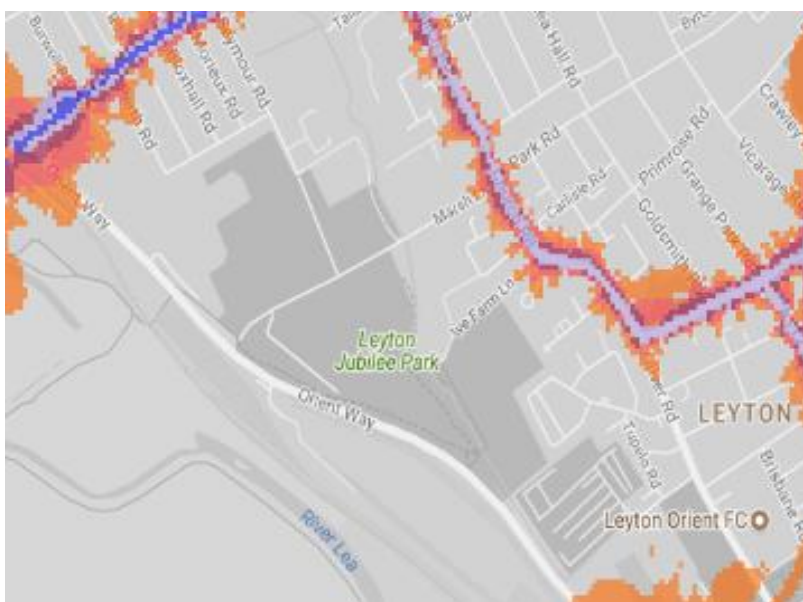


London Borough of Waltham Forest

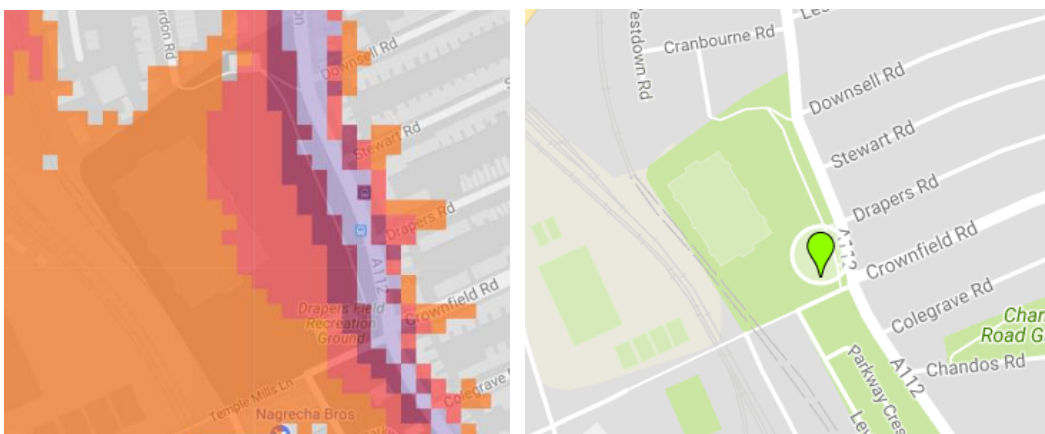
1. Abbots Park



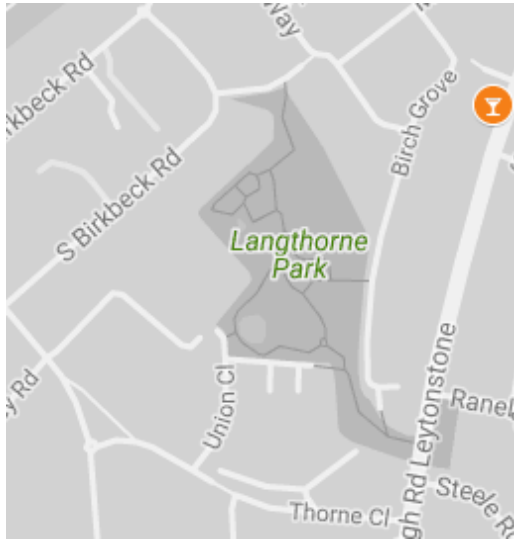
2. Leyton Jubilee Park



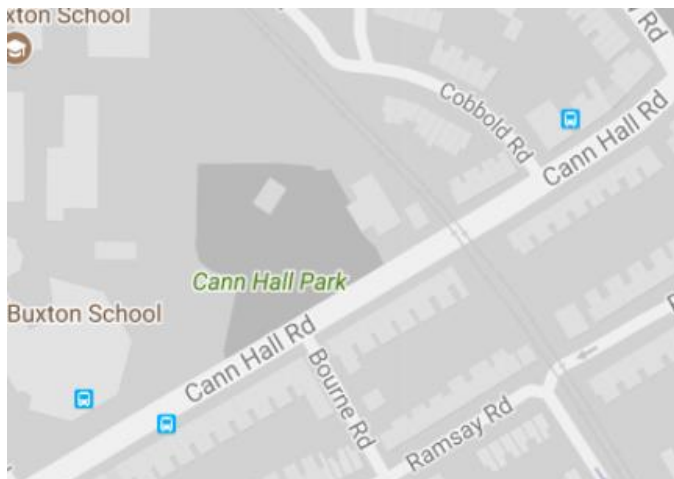
3. Drapers Field Recreation Ground



4. Langthorne Park



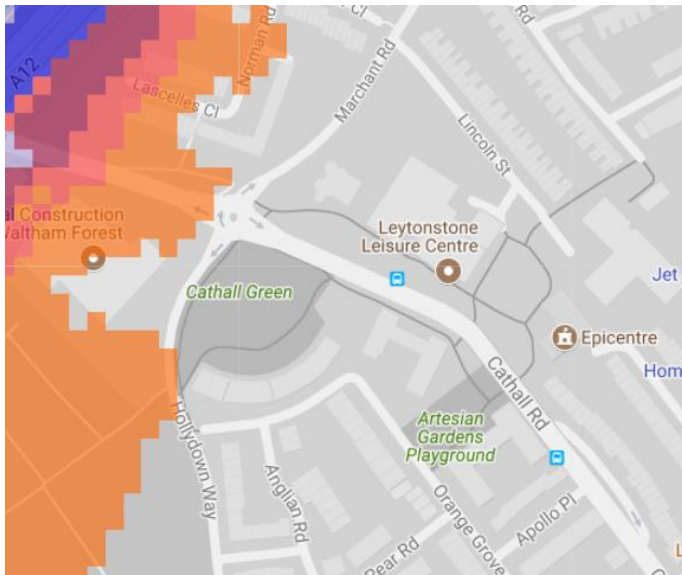
5. Cann Hall Park



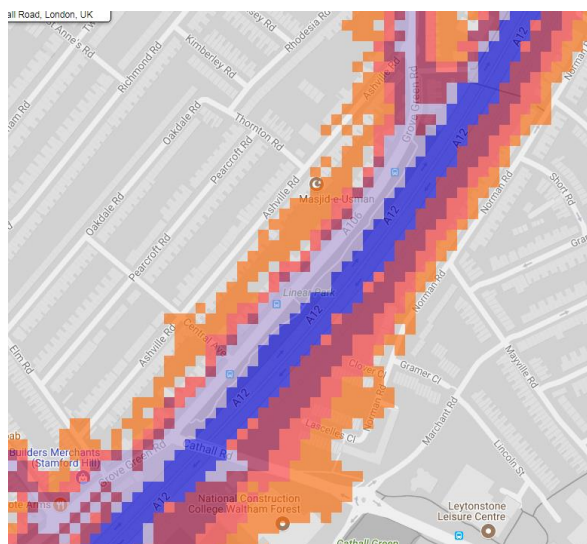
6. Acacia Road Playground



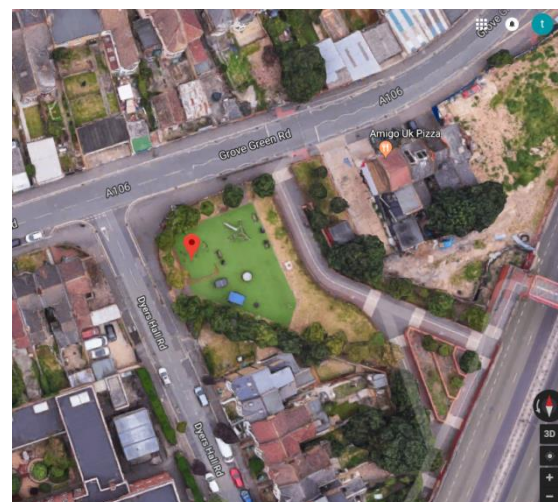
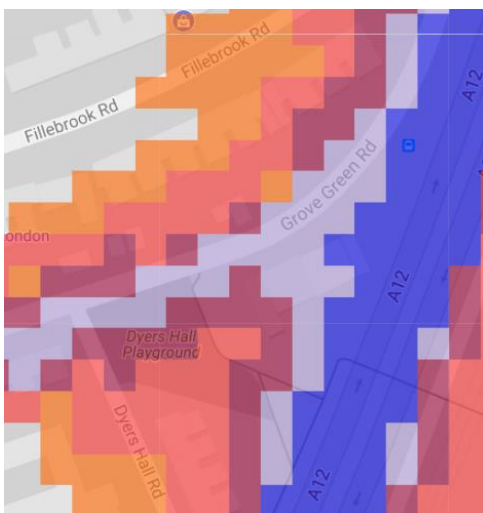
7. Cathall Green Playground / Artesian Gardens Playground



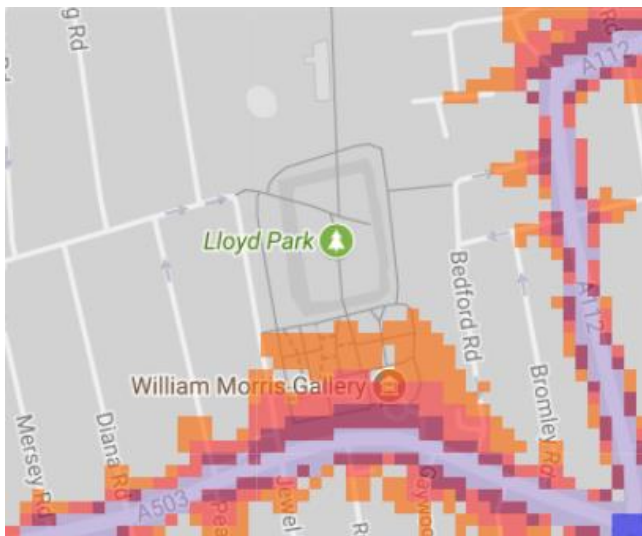
8. Linear Park



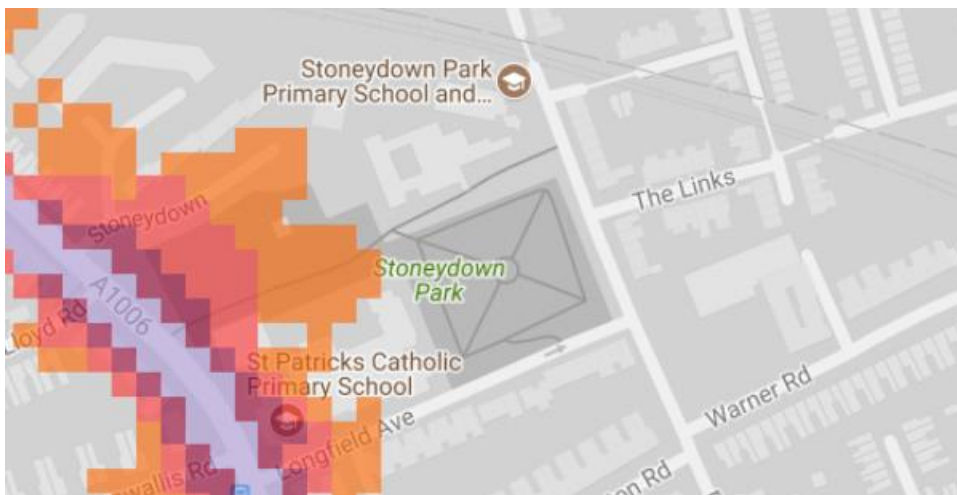
9. Dyers Hall Playground



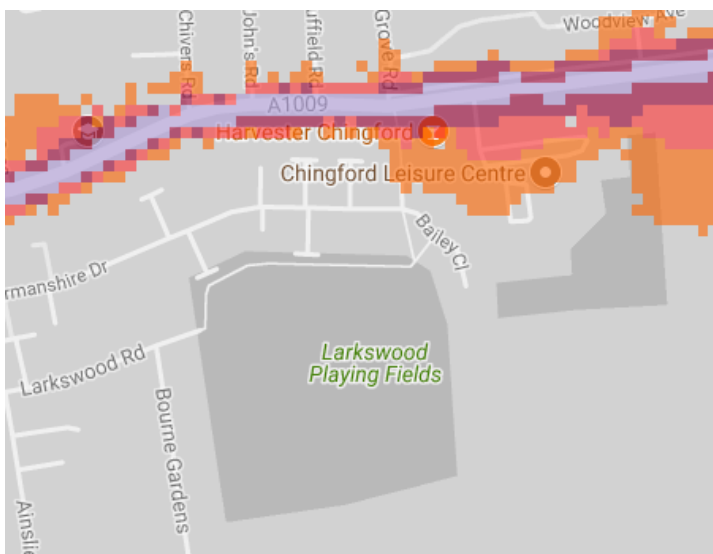
10. Lloyd Park



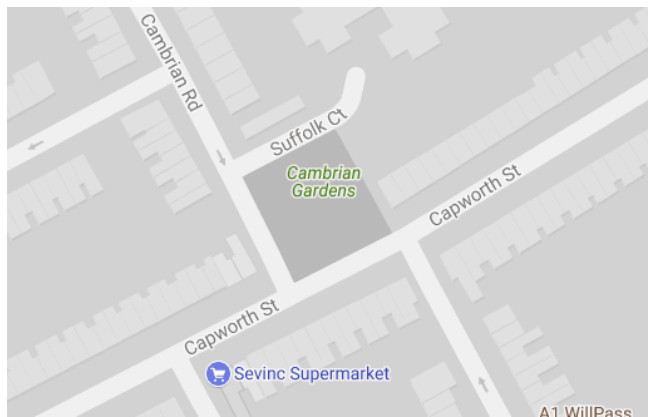
11. Stoneydown Park and Gardens



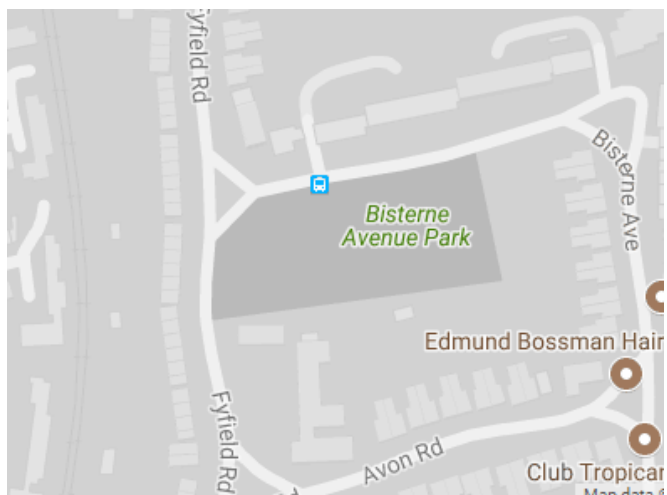
12. Larkwood Playing Fields



13. Cambrian Gardens

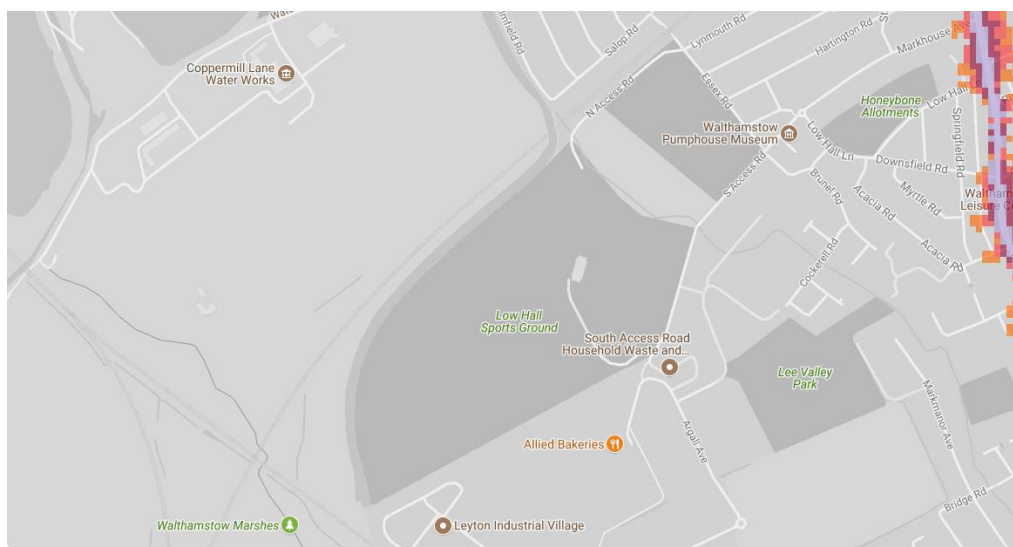


14. Bisterne Avenue Park

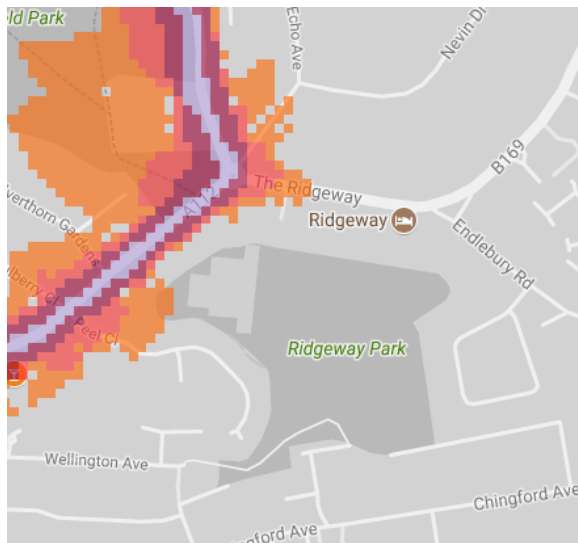


15. St James Park / Low Hall Sports

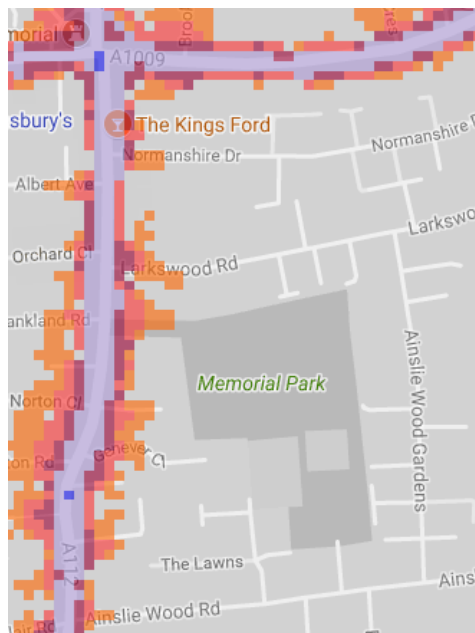
Ground



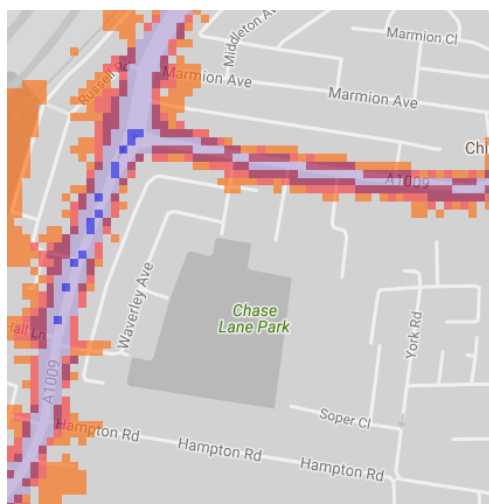
16. Ridgeway Park



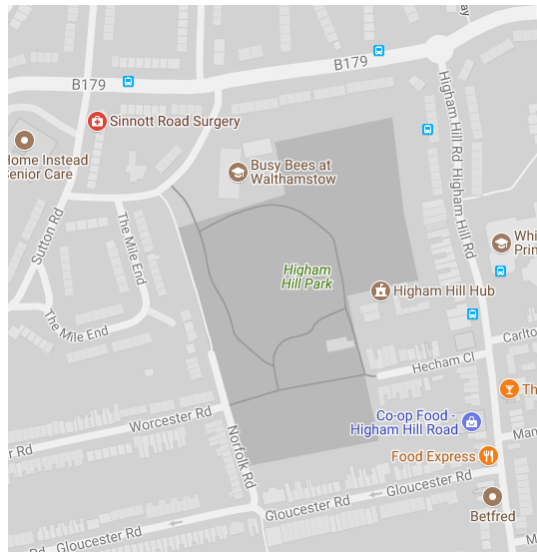
17. Memorial Park



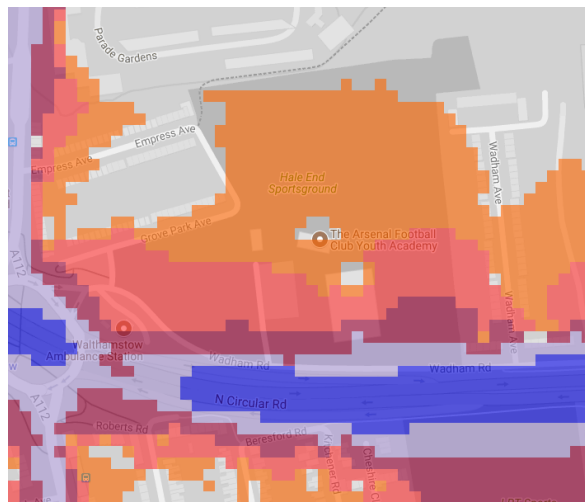
18. Chase Lane Park



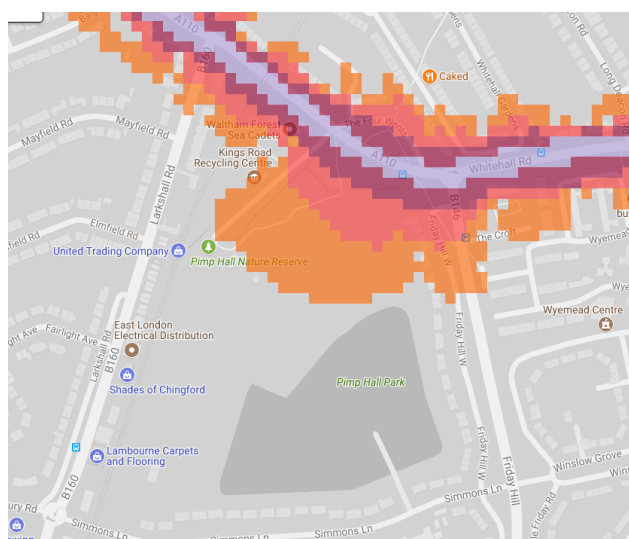
19. Higham Hill Park



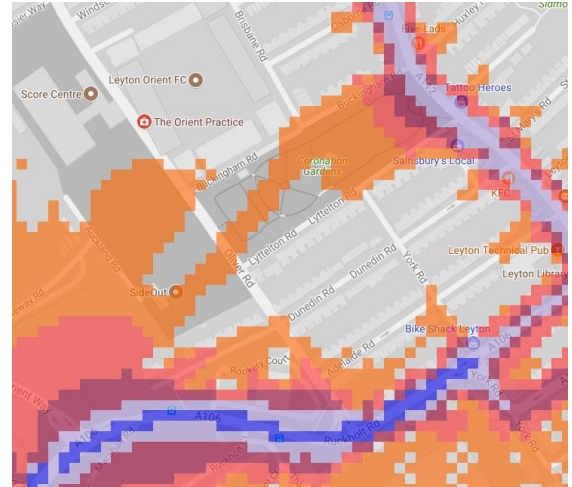
20. Hale End Sports Ground



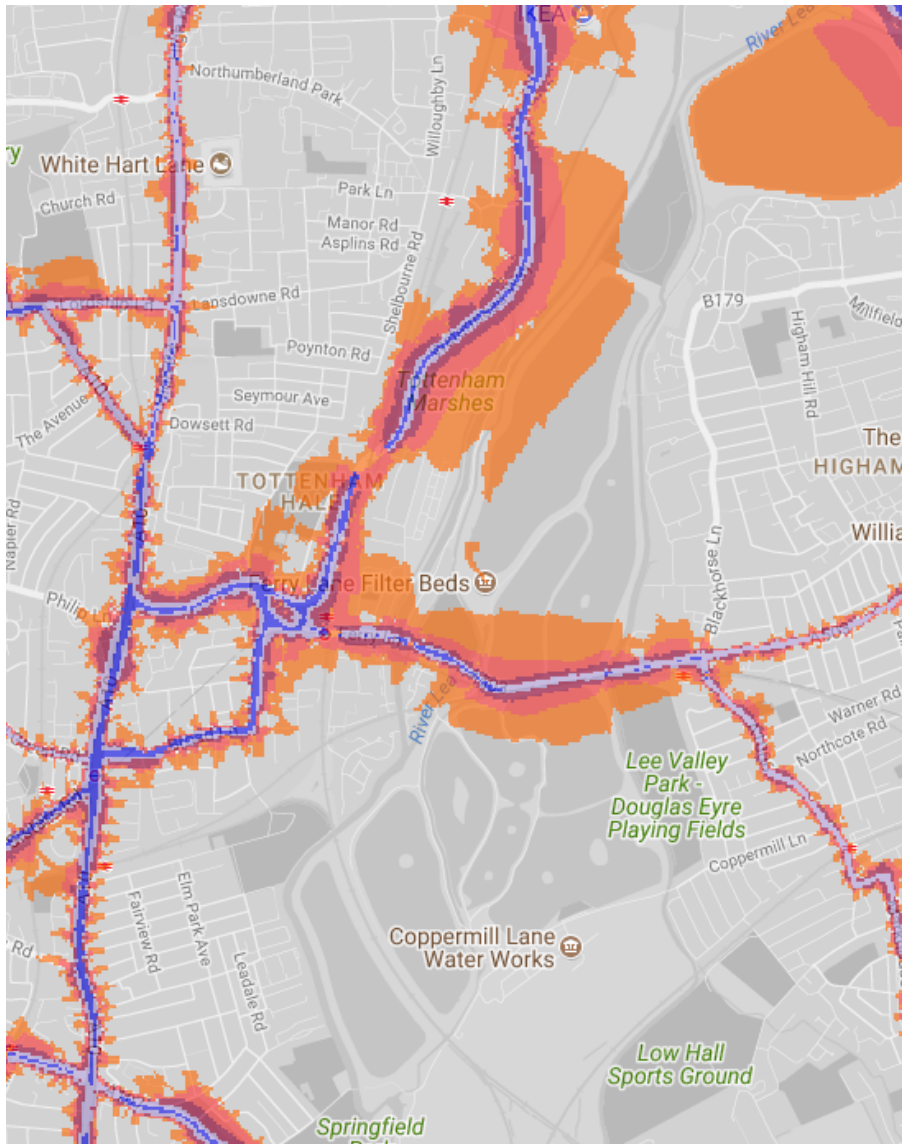
21. Pimp Hall Park and Nature Reserve



22. Coronation Gardens



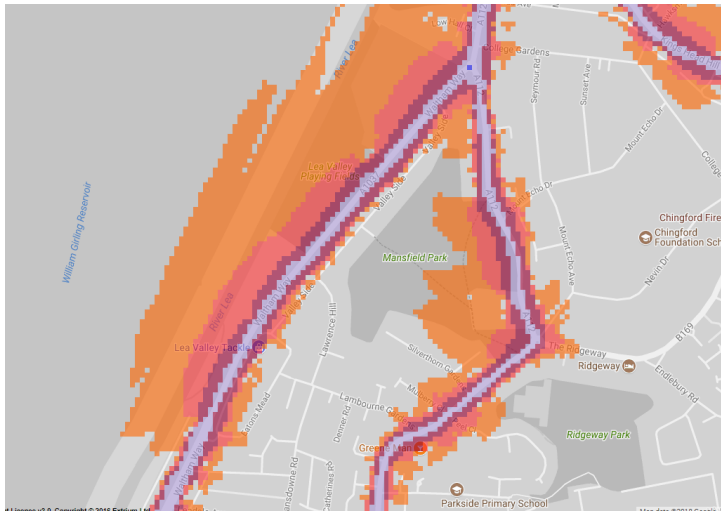
23. Walthamstow Wetlands



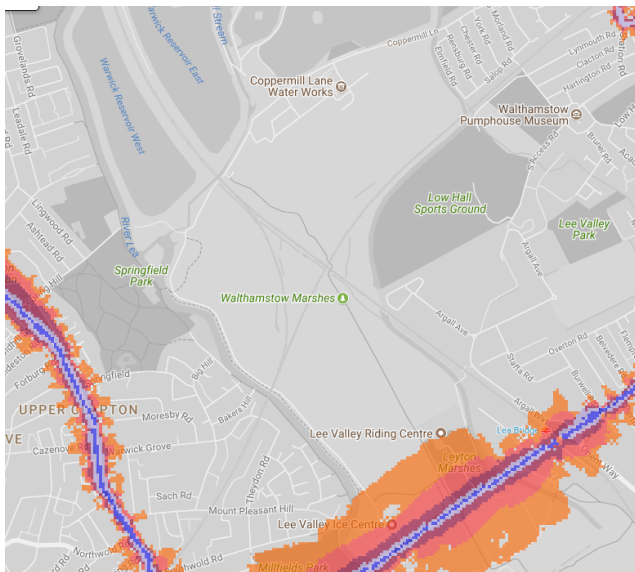
24. Mansfield Park

25. Lea Valley Playing Fields (on the East bank of the reservoir)

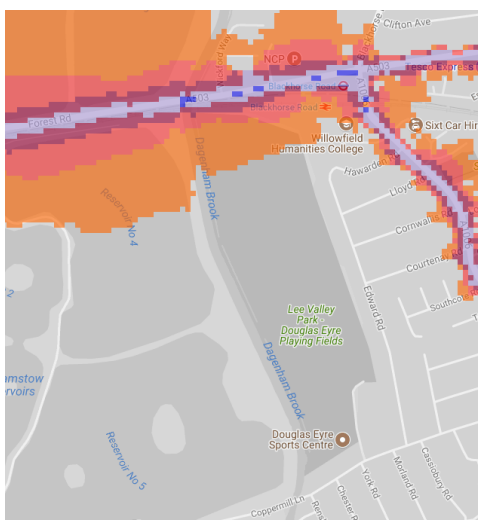
26. Ridgeway Park



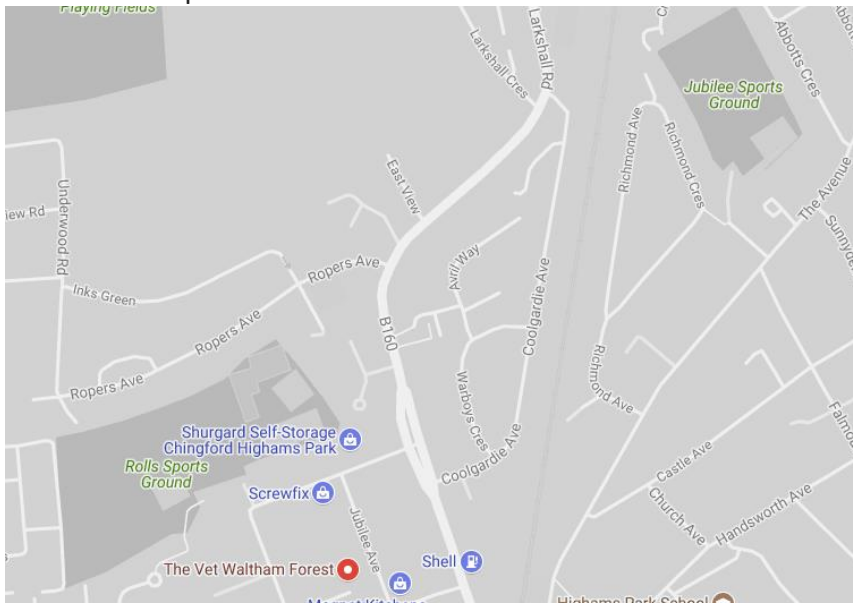
27. Walthamstow Marshes



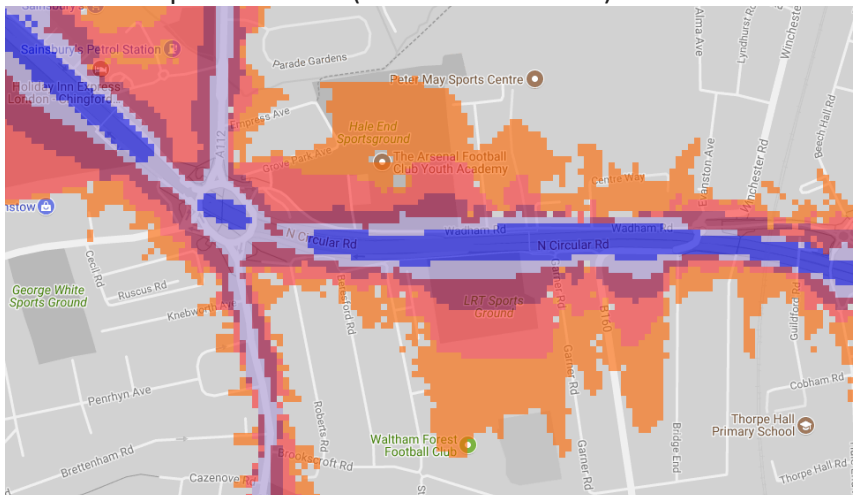
28. Lee Valley Park / Douglas Eyre Playing Fields (nr Blackhorse Rd)



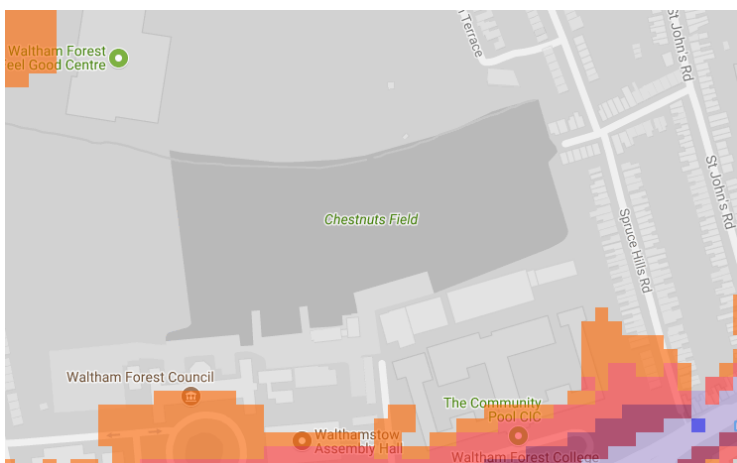
29. Jubilee Sports Ground and ...
30. Rolls Sports Ground



31. Hale End Sports Ground (north of N Circular) and...
32. LRT Sports Ground (south of N Circular)

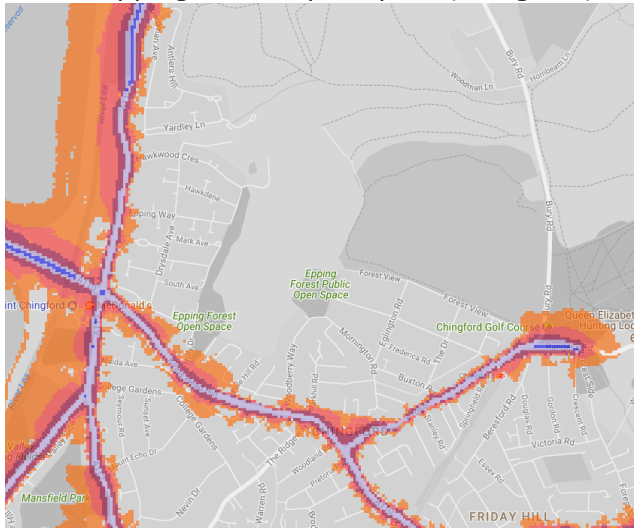


33. Chestnuts Field

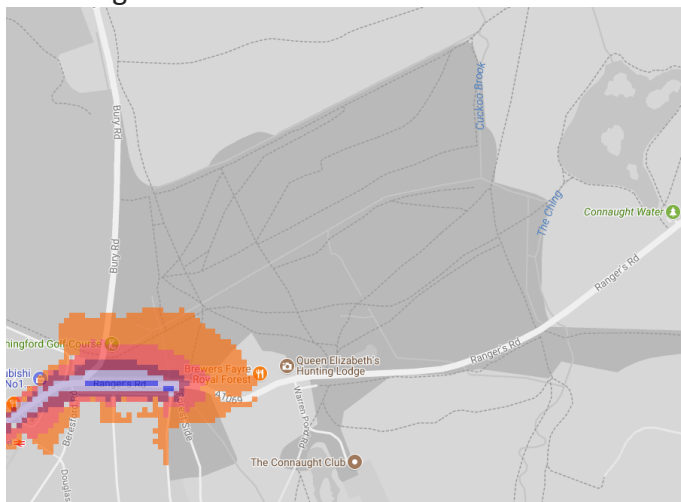


EPHING FOREST SPACES IN WALTHAM FOREST (NORTH TO SOUTH)

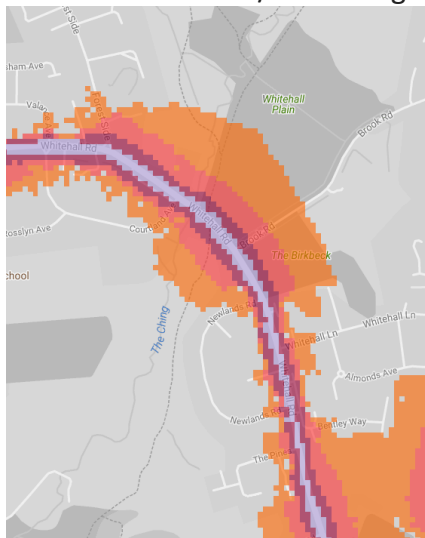
34. Epping Forest Open Space (Chingford)



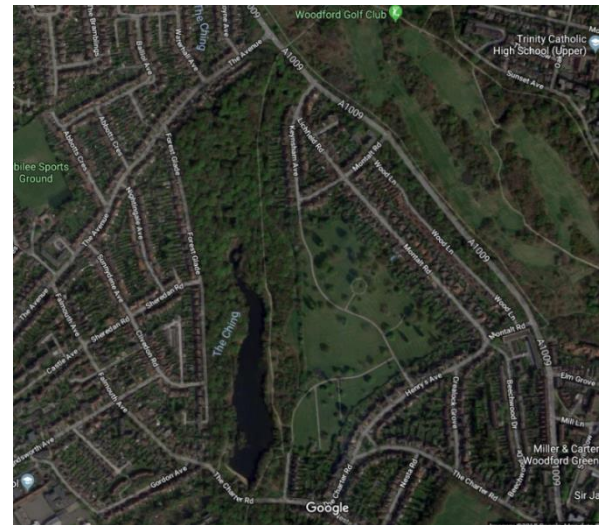
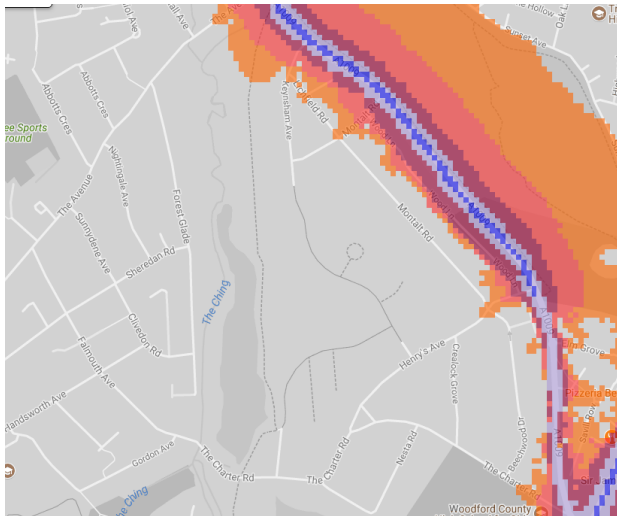
35. Chingford Plain



36. Whitehall Plain / The Ching

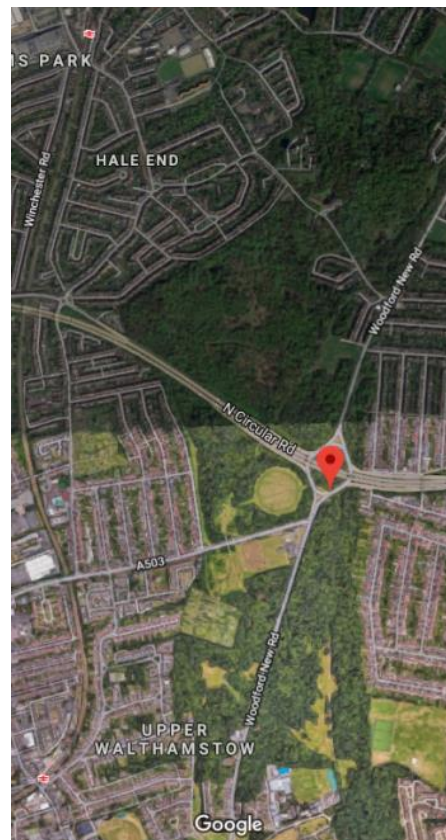
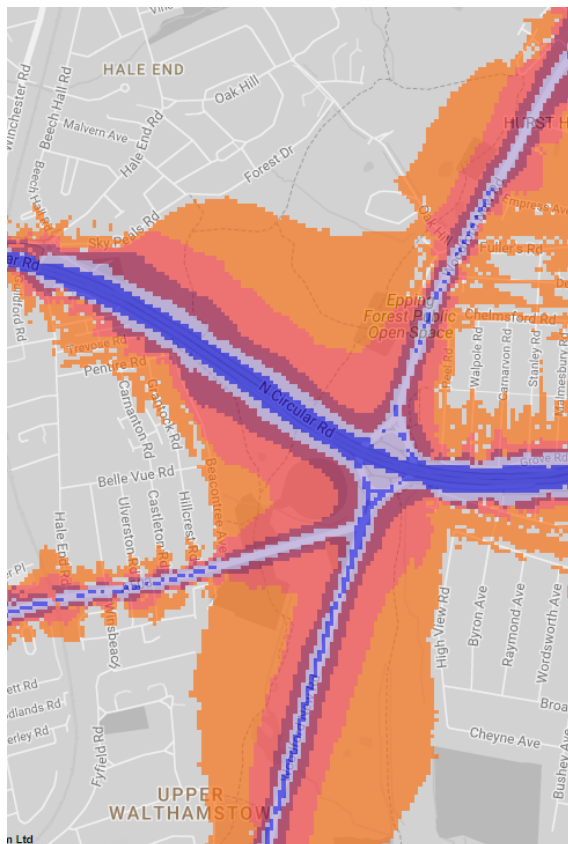


37. The Ching open space

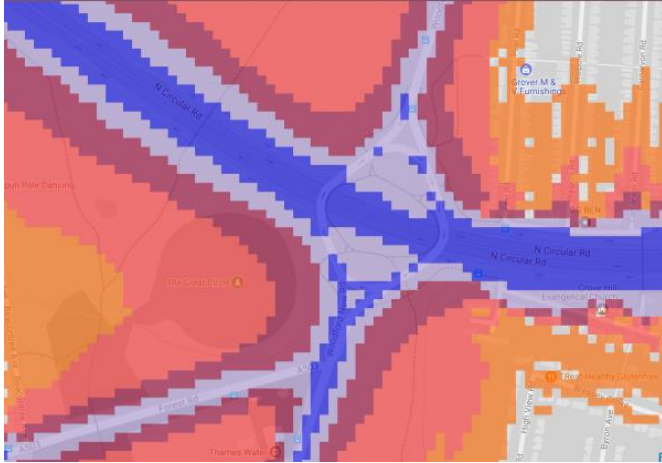


38. Epping Forest Public Open Space (north of North Circular)

39. Epping Forest - The Great Circle / and space to the east and west of Woodford New Rd (south of North Circular)



Detail of the 'Great Circle'



40. Epping Forest - Hollow Ponds

