

Traffic noise maps of public parks in Haringey



May 2018

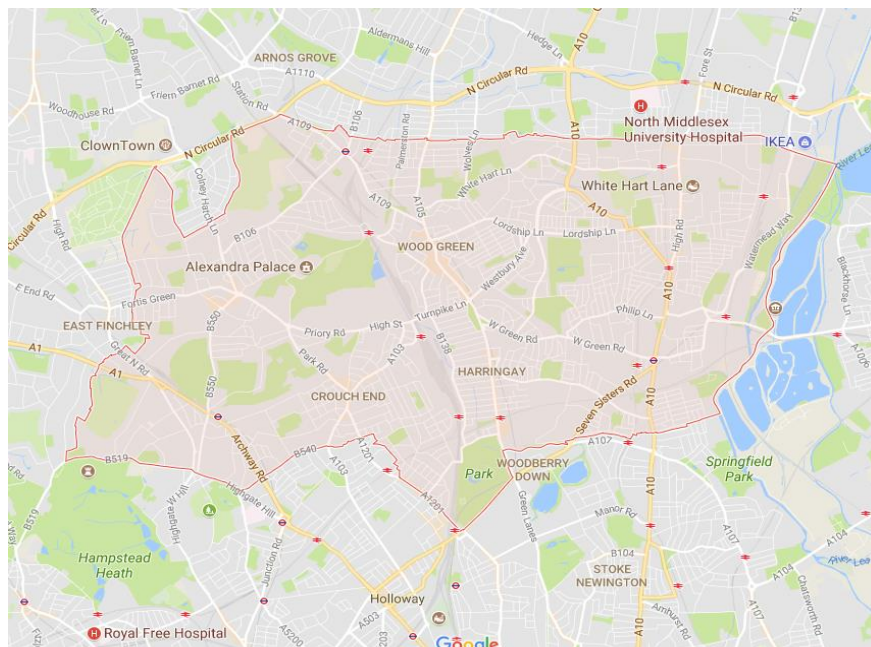
This document shows traffic noise maps for parks in the borough. The noise maps are taken from <http://www.extrium.co.uk/noiseviewer.html>. Occasionally, google earth or google map images are included to help the reader identify where the park is located.

Similar documents are available for all London Boroughs. These were created as part of research into the impact of traffic noise in London's parks. They should be read in conjunction with the main report and data analysis which are available at <http://www.cprelondon.org.uk/resources/item/2390-noiseinparks>.

The key to the traffic noise maps is shown here to the right. Orange denotes noise of 55 decibels (dB). Louder noises are denoted by reds and blues with dark blue showing the loudest. Where the maps appear with no colour and are just grey, this means there is no traffic noise of 55dB or above.

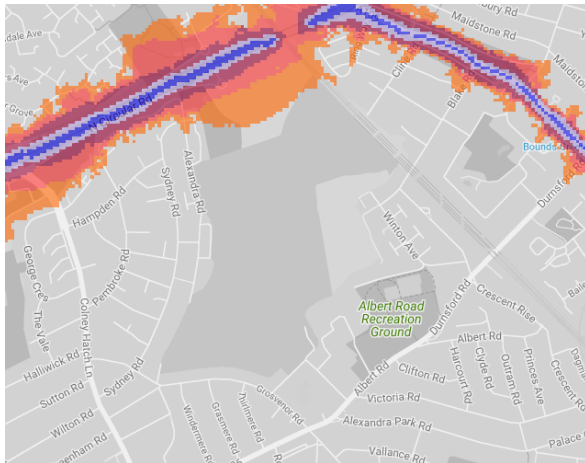
Average noise level (dB)

| | |
|--------------|---------------|
| Blue | 75.0 and over |
| Dark Blue | 70.0 - 74.9 |
| Red | 65.0 - 69.9 |
| Orange | 60.0 - 64.9 |
| Light Orange | 55.0 - 59.9 |

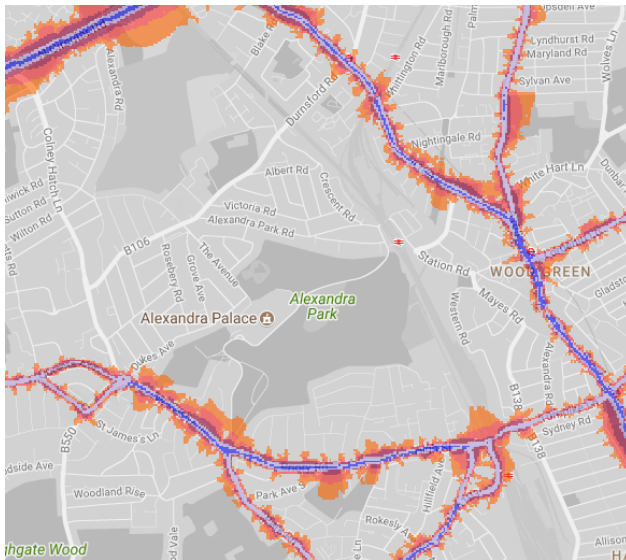


London Borough of Haringey

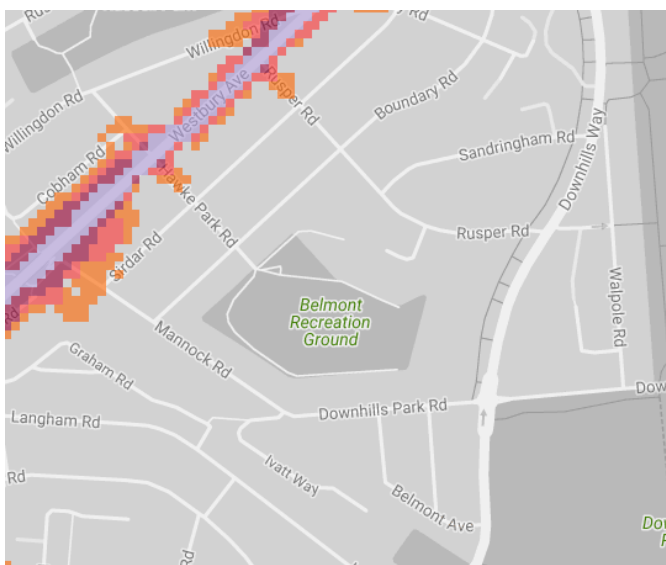
1. Albert Road Recreation Ground



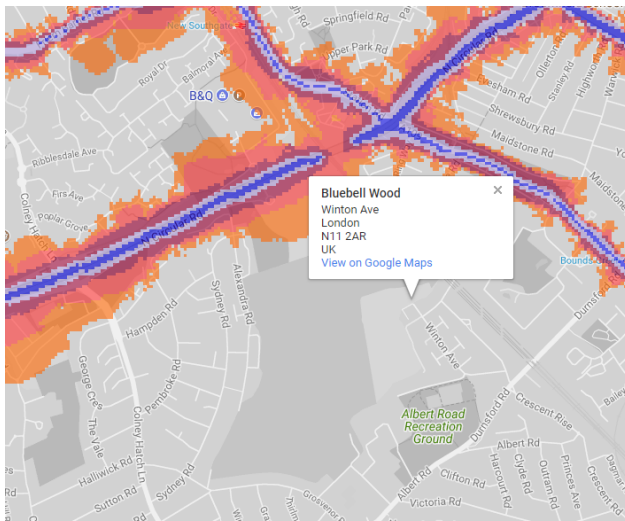
2. Alexandra Palace Park



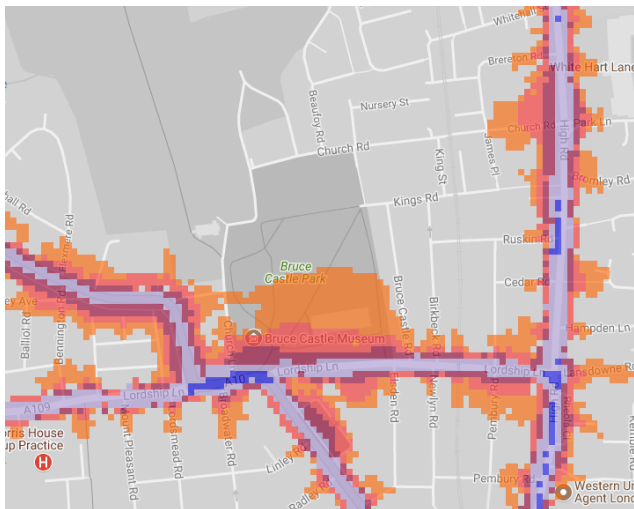
3. Belmont Recreation Ground



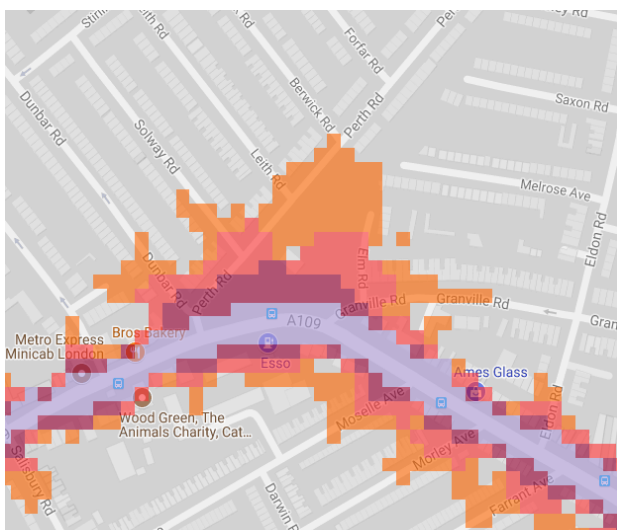
4. Bluebell Wood



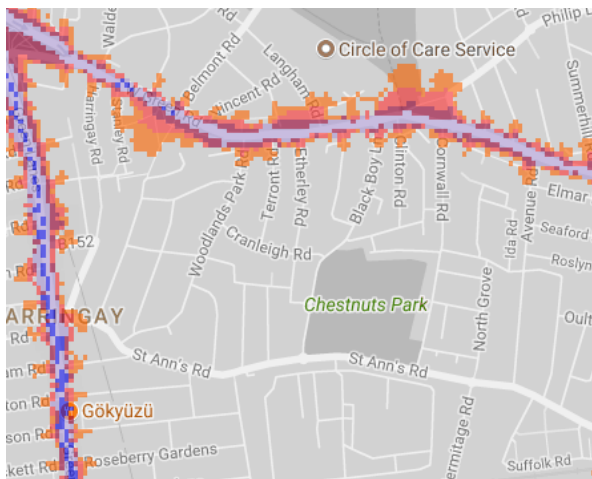
5. Bruce Castle Park



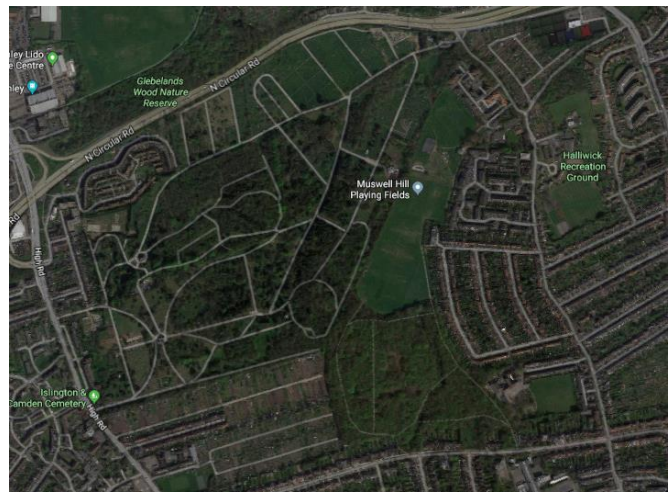
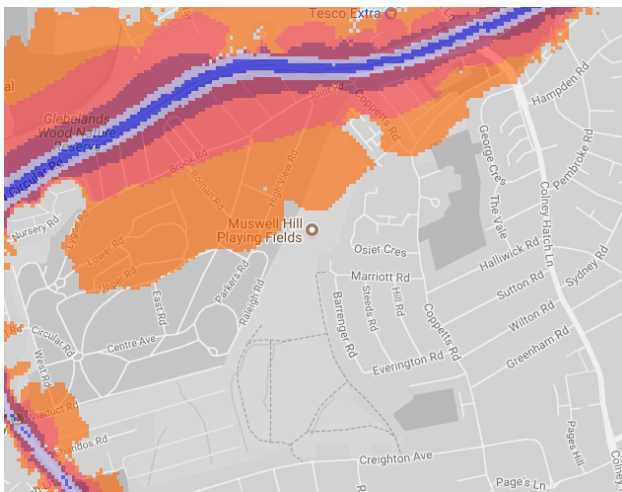
6. Chapmans Green



7. Chestnuts Park



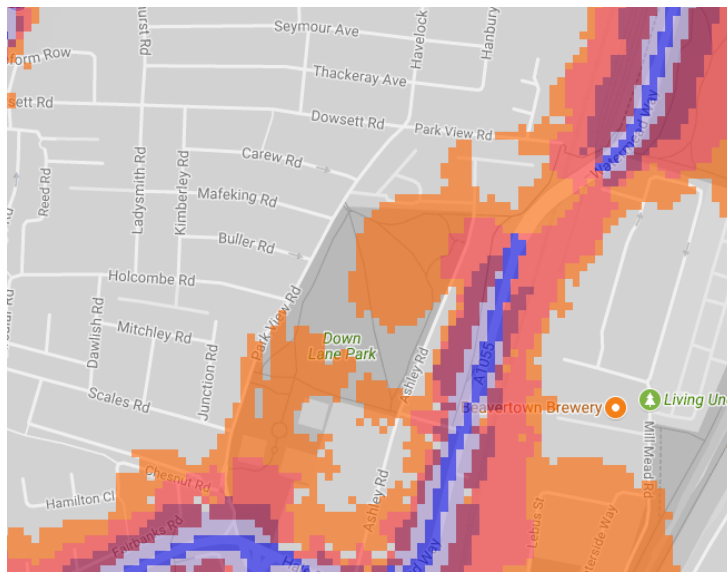
8. Coldfall Wood, Muswell Playing Field (Excluding cemetery)



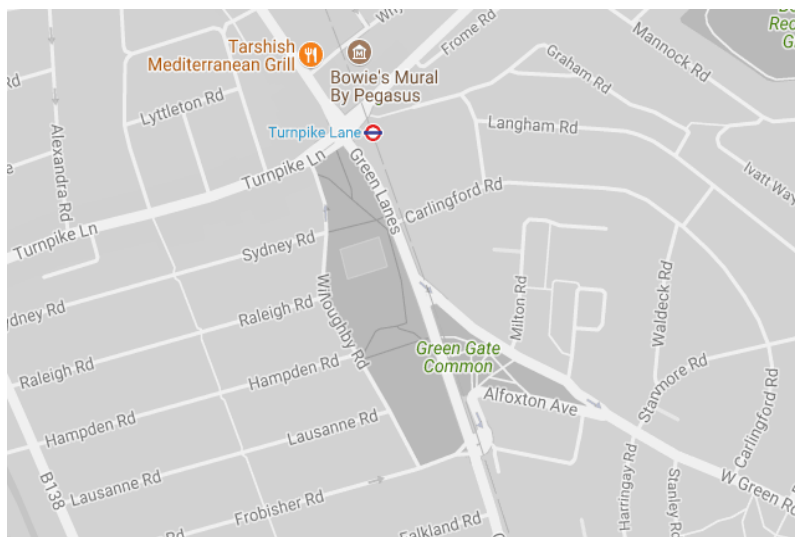
9. Downhills Park, 10. Lordship Recreation Ground



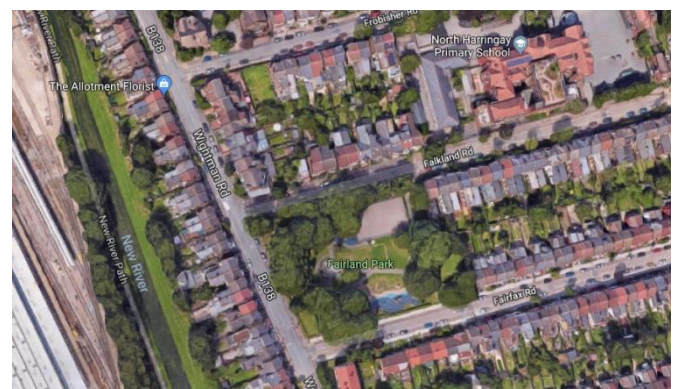
11. Down Lane Recreation Ground



12. Ducketts Common

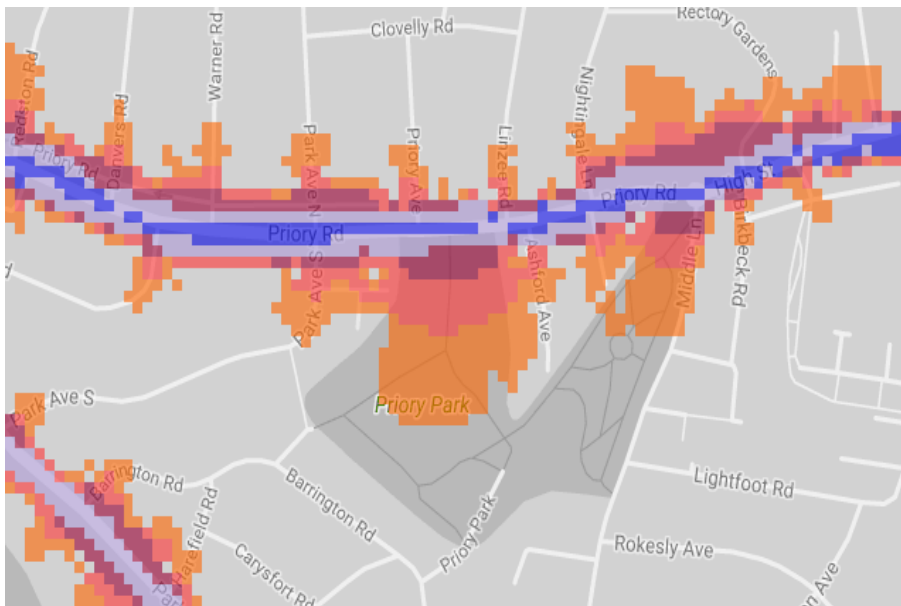


13. Fairland Park

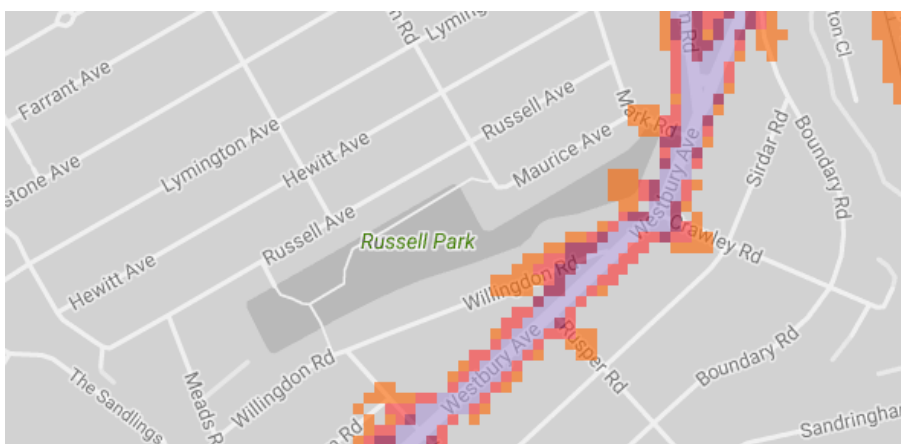


The map shows a network of streets including Cedar Rd, Birkbeck Rd, Lordship Ln, and others. Key landmarks such as Hartington Park and Harris Primary Academy are labeled. A color-coded overlay, primarily in shades of orange and red, highlights a specific area or route, possibly related to the 'Red' mentioned in the text. The Western Union Agent London is marked with a brown circle icon.

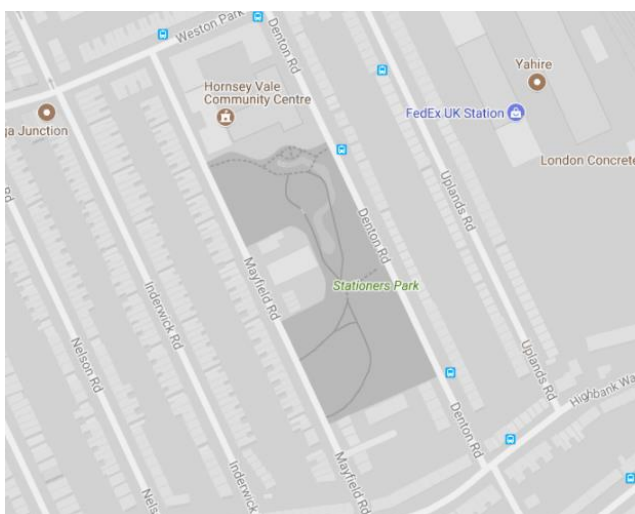
17. Priory Park



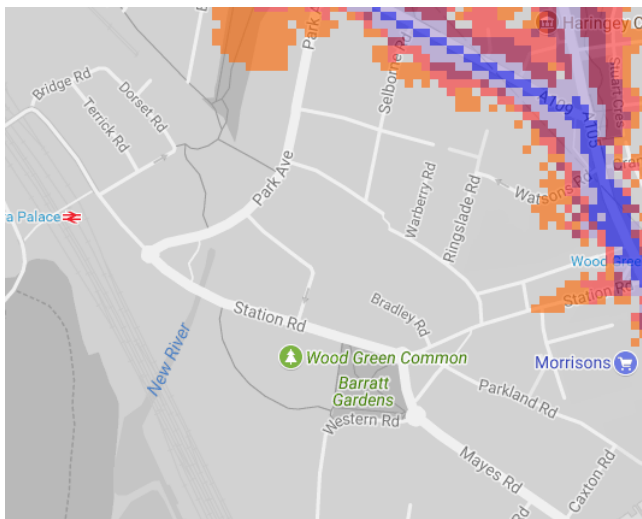
18. Russell Park



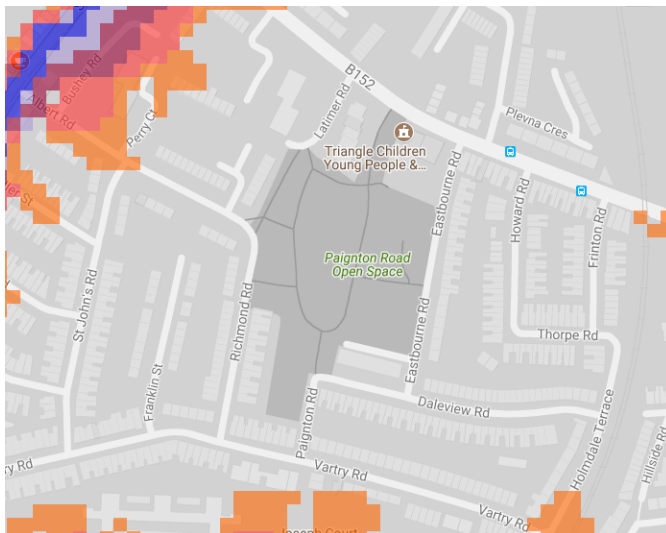
19. Stationers Park



20. Wood Green Common



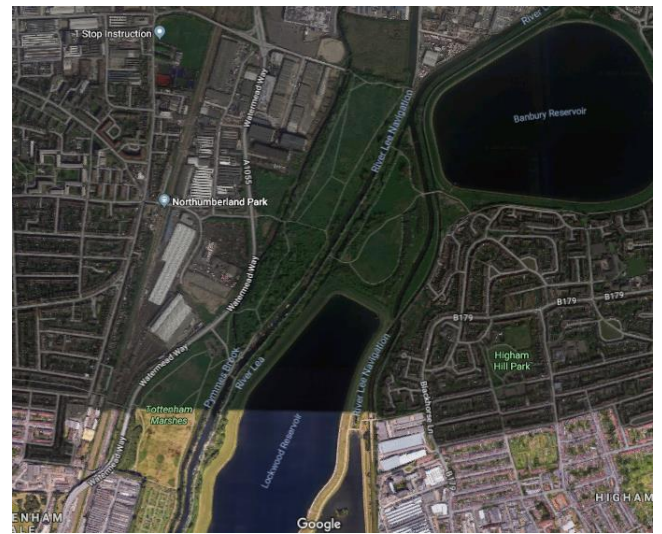
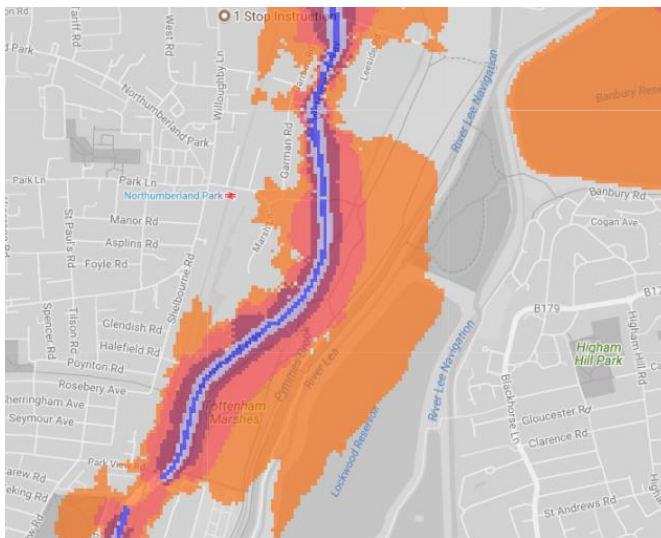
21. Paignton Road Open Space



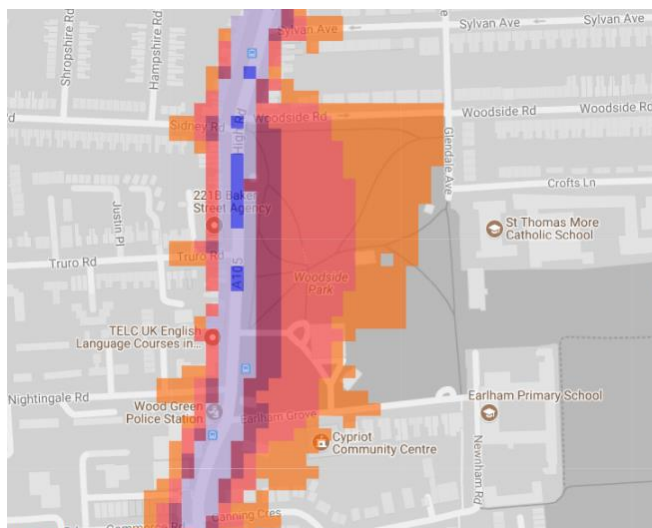
22. Highgate Wood, 23. Queen's Wood, Crouch End Playing Fields



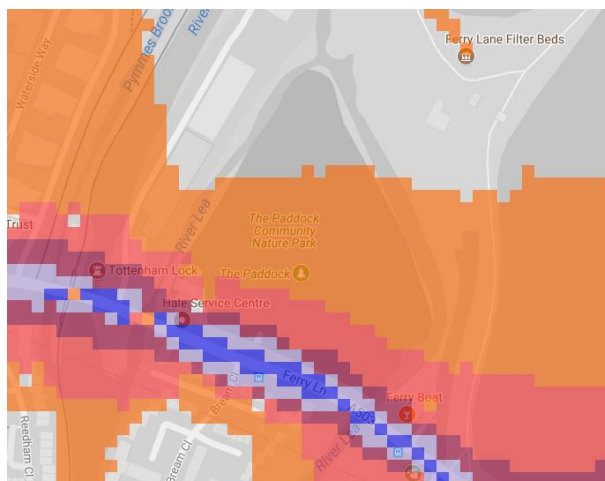
24. Tottenham Marshes



25. Woodside Park



26. The Paddock Community Nature Park



27. Nightingale Gardens/Trinity Gardens

