

Traffic noise maps of public parks in Barnet



May 2018

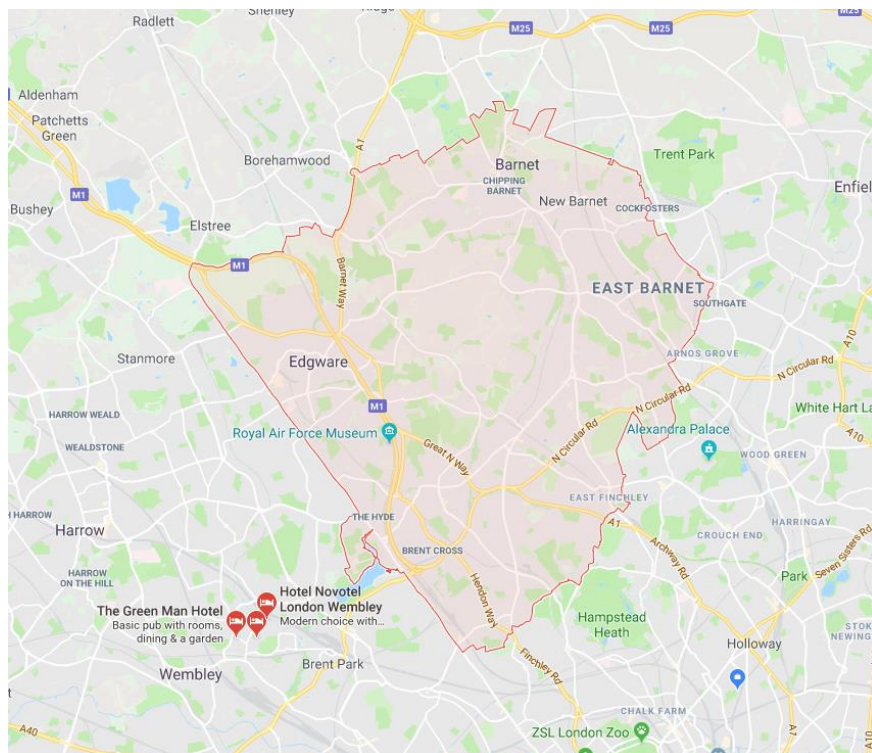
This document shows traffic noise maps for parks in the borough. The noise maps are taken from <http://www.extrium.co.uk/noiseviewer.html>. Occasionally, google earth or google map images are included to help the reader identify where the park is located.

Similar documents are available for all London Boroughs. These were created as part of research into the impact of traffic noise in London's parks. They should be read in conjunction with the main report and data analysis which are available at <http://www.cprelondon.org.uk/resources/item/2390-noiseinparks>.

The key to the traffic noise maps is shown here to the right. Orange denotes noise of 55 decibels (dB). Louder noises are denoted by reds and blues with dark blue showing the loudest. Where the maps appear with no colour and are just grey, this means there is no traffic noise of 55dB or above.

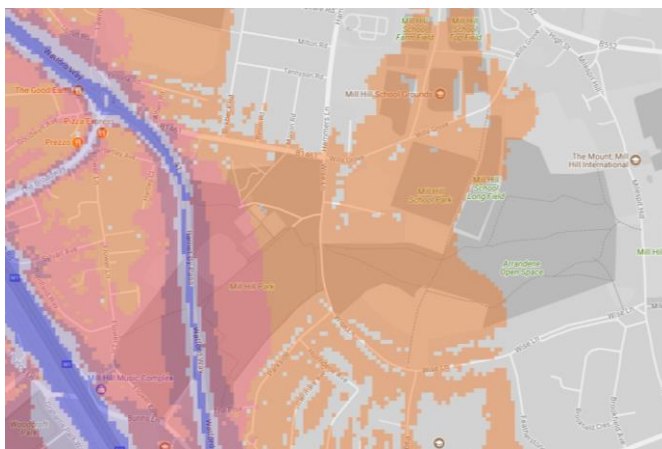
Average noise level (dB)

Blue	75.0 and over
Dark Blue	70.0 - 74.9
Red	65.0 - 69.9
Orange	60.0 - 64.9
Light Orange	55.0 - 59.9



London Borough of Barnet

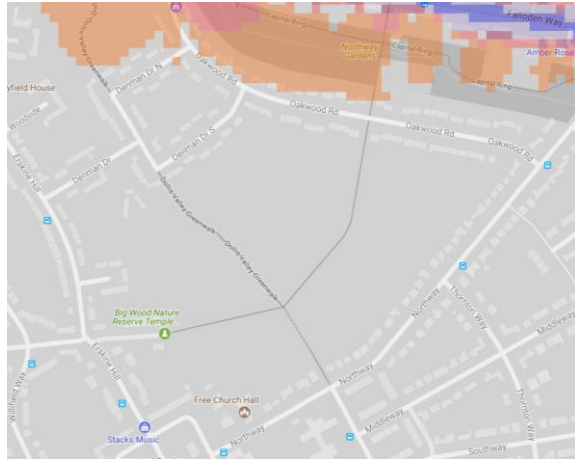
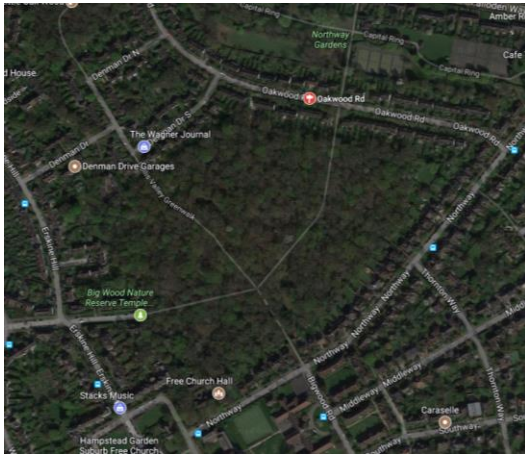
1. Arrandene Open Space, Mill Hill Park



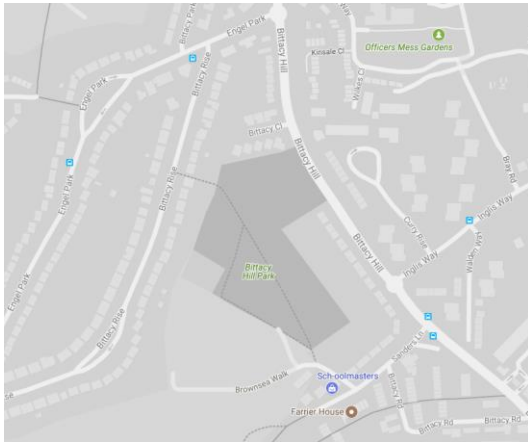
2. Bethune Park (Bethune Nature reserve and Bethune Recreation Ground)



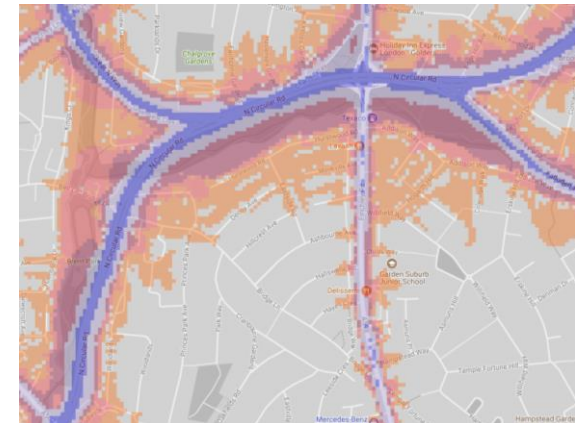
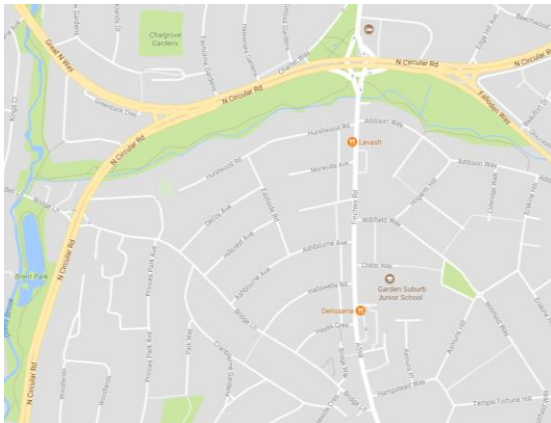
3. Bigwood Nature Reserve



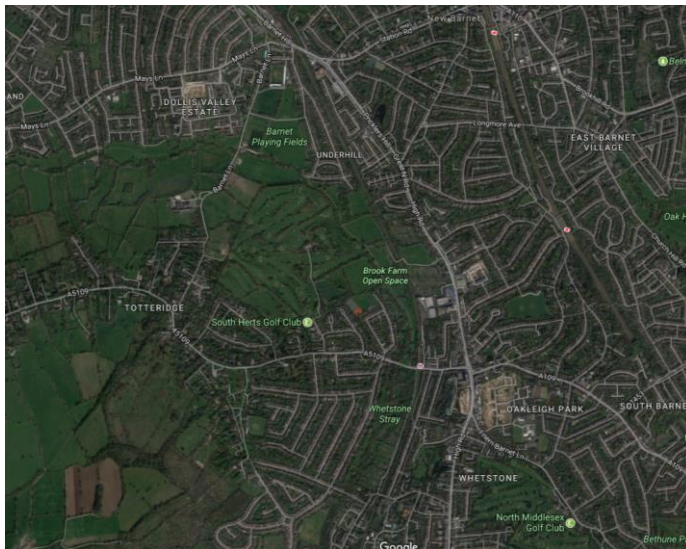
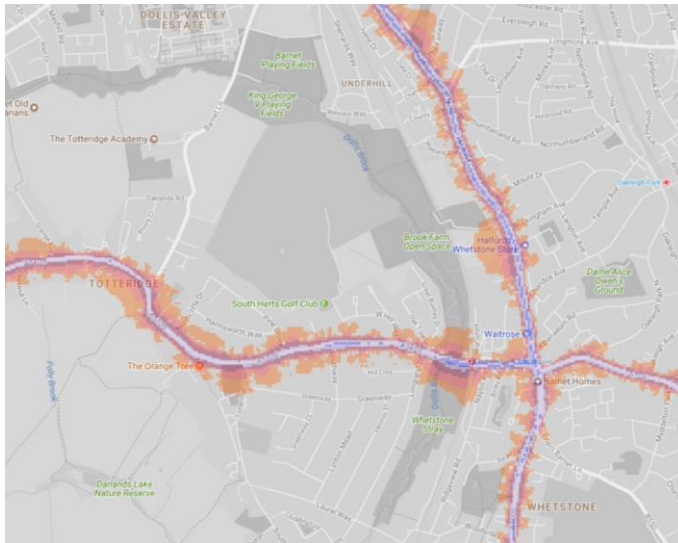
4. Bittacy Hill Park



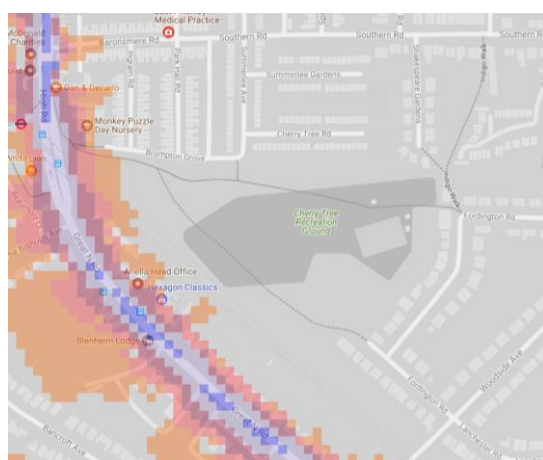
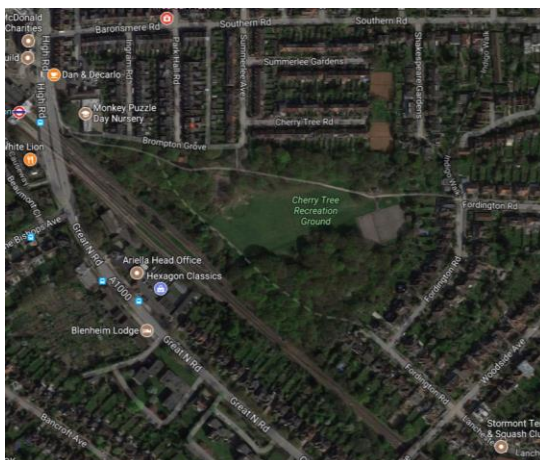
5. Brent Park, Brookside Walk



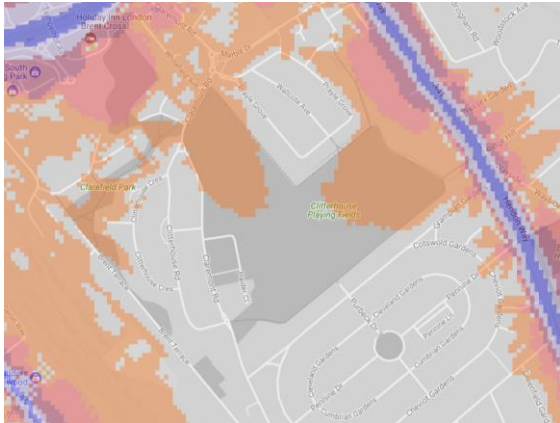
6. Brook Farm Open Space, Wyatts Farm Park, Barnet Playing Fields, George V Playing Fields, Whetstone Stray



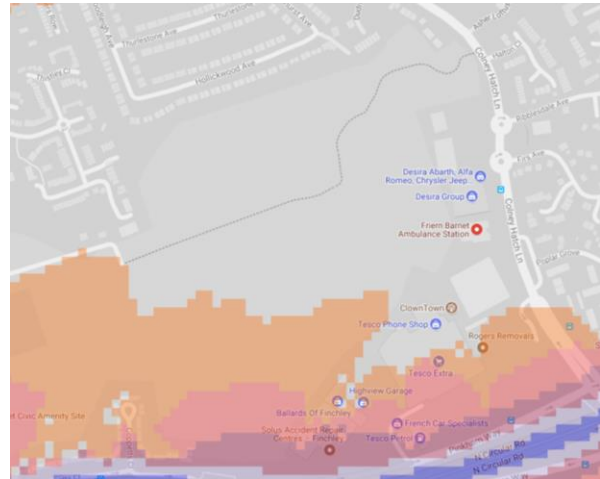
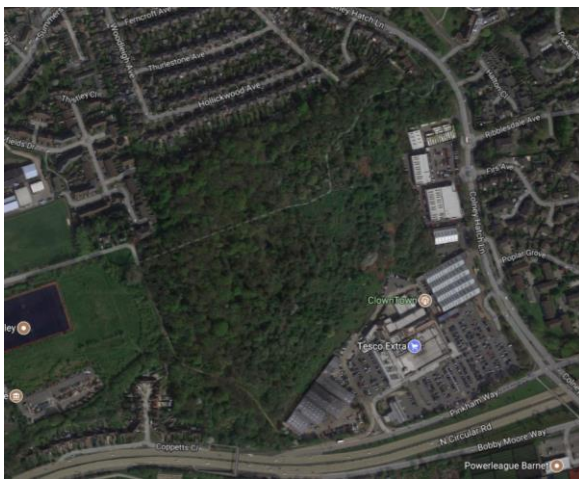
7. Cherry Tree Hill, Cherry Tree Wood



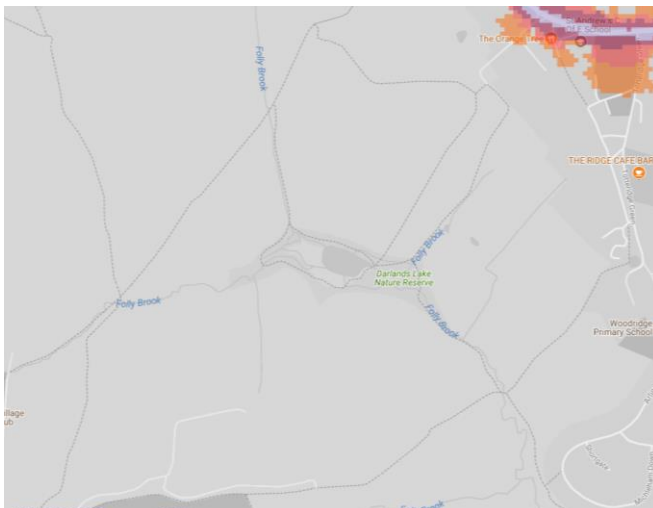
8. Clarefield Park, Clitterhouse Playing Field



9. Coppetts Woods



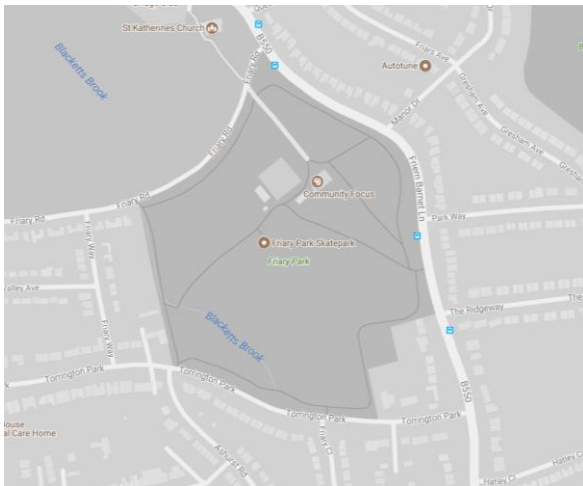
10. Darlands Lake Nature Reserve



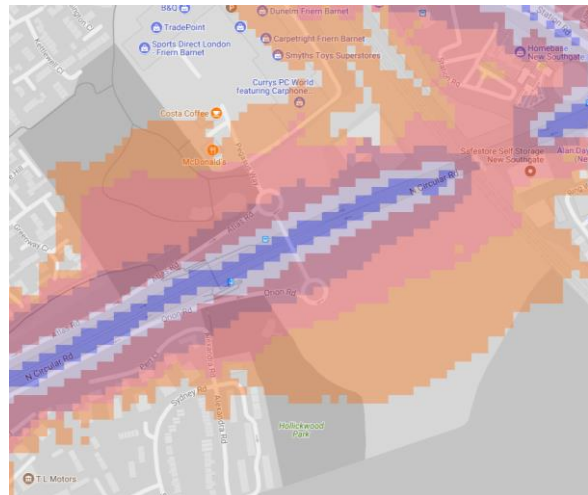
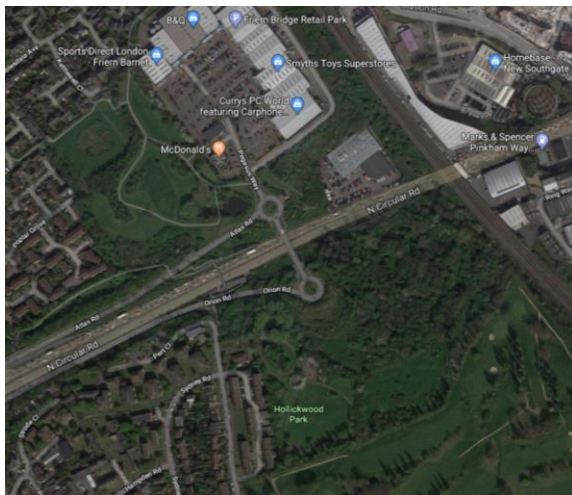
11. Edgwarebury Park



12. Friary Park



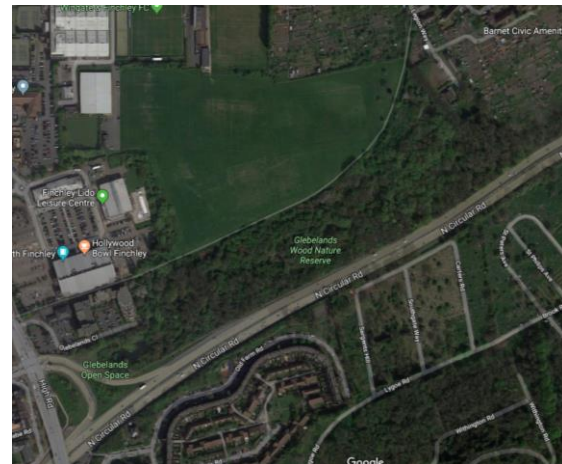
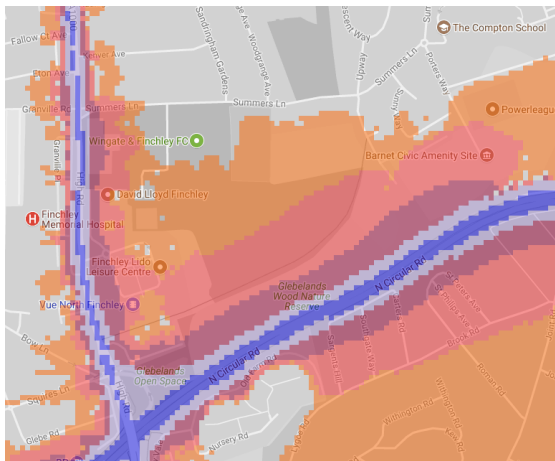
13. Friern Bridge Open Space, Bounds Green, Fairview Open Space, Hollickwood Park



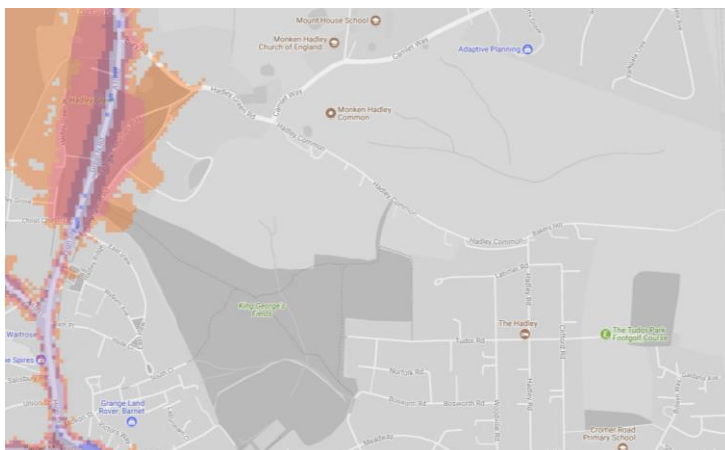
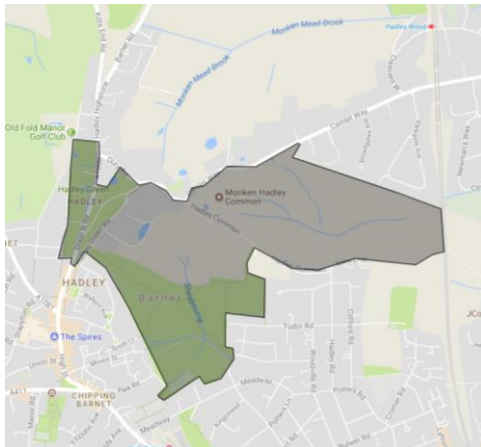
14. Friern Park



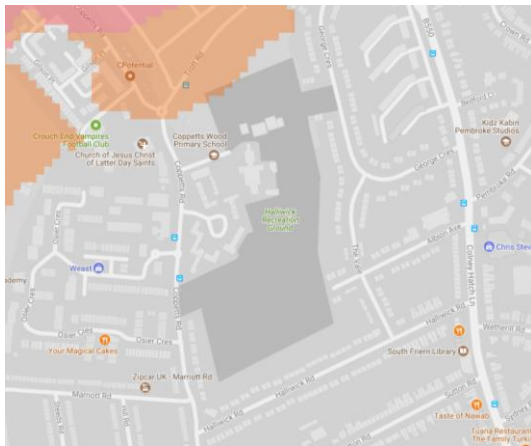
15. Glebelands Wood Nature Reserve



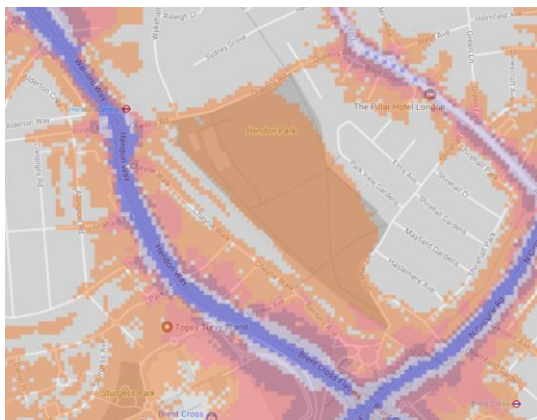
16. Hadley Common, Hadley Green, King Georges Field, Monken Hadley Common (Woods)



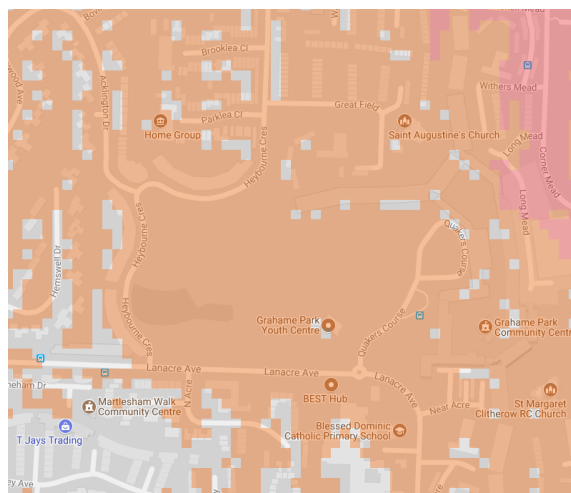
17. Halliwick Recreation Ground



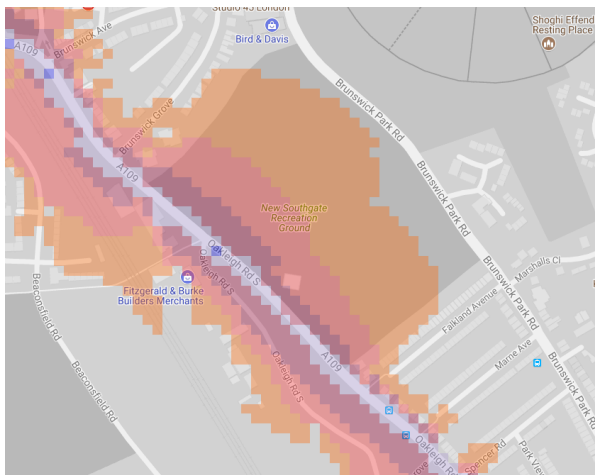
18. Hendon Park



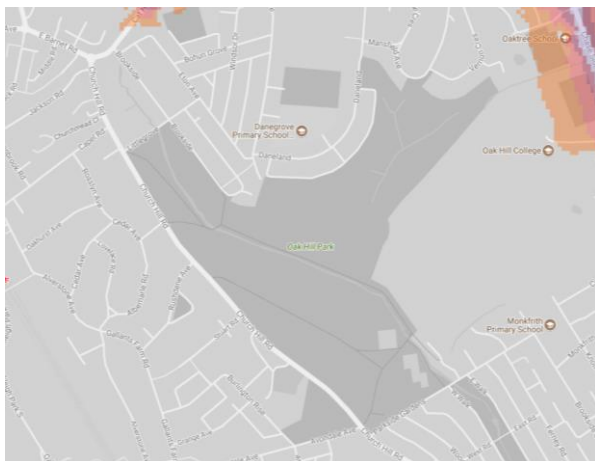
19. Heybourne Park



20. New Southgate Recreation Ground



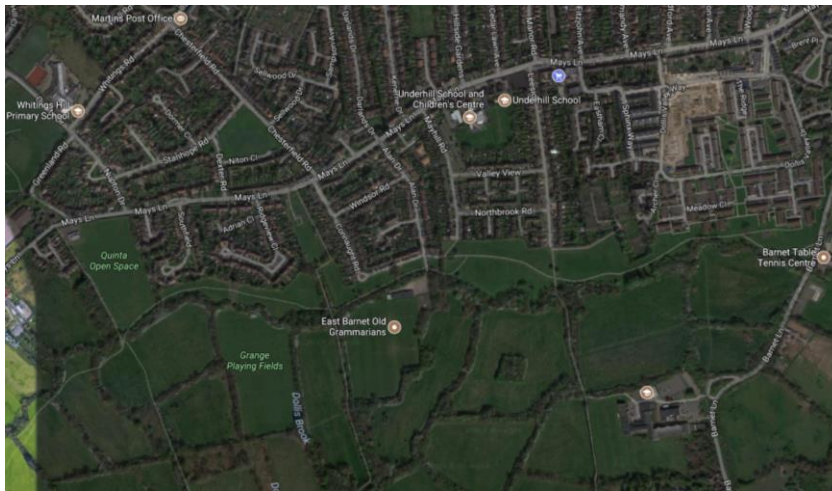
21. Oak Hill Park, Oak Hill Woods and Meadow



22. Old Courthouse Recreation Ground



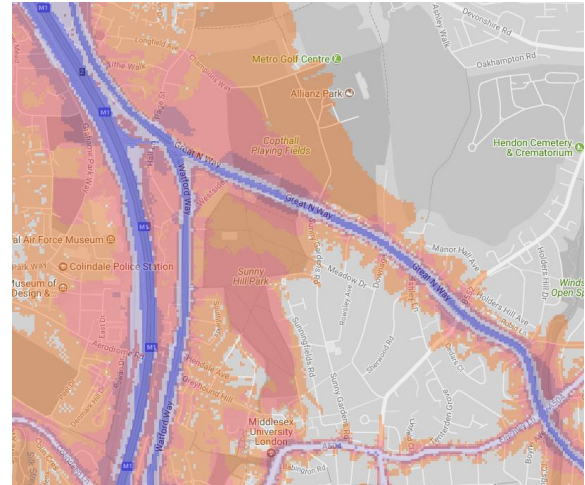
23. Quinta Open Space, Grange Playing Fields



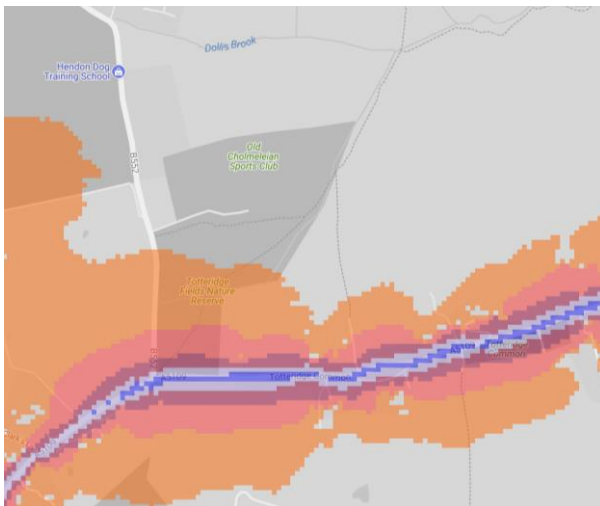
24. Silkstream Park, Montrose playing field



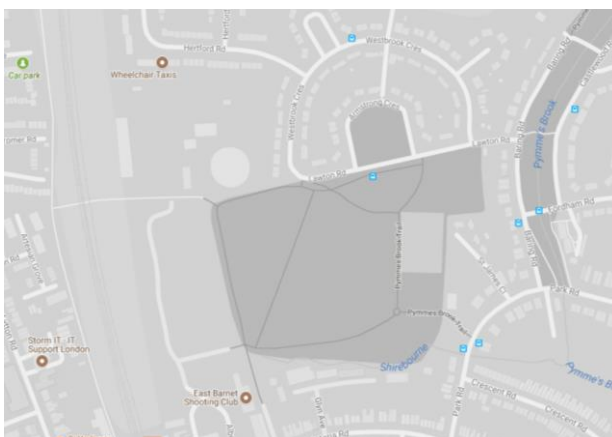
25. Sunny Hill Park, Copthall Playing Fields



26. Totteridge Fields



27. Victoria Park



An aerial photograph of the West Hendon area in London. The River Brent flows through the center, with several parks and green spaces along its banks. Labeled areas include Kingsbury Green to the northwest, Church Lane Recreation Ground to the west, Silver Jubilee Park to the north, York Park to the east, and Woodfield Park to the south. Residential areas are visible around the green spaces. Major roads like the A404 and A403 are shown. Landmarks such as Sainsbury's and Staples Corner Business Park are also marked.

