

Traffic noise maps of public parks in Barking and Dagenham



May 2018

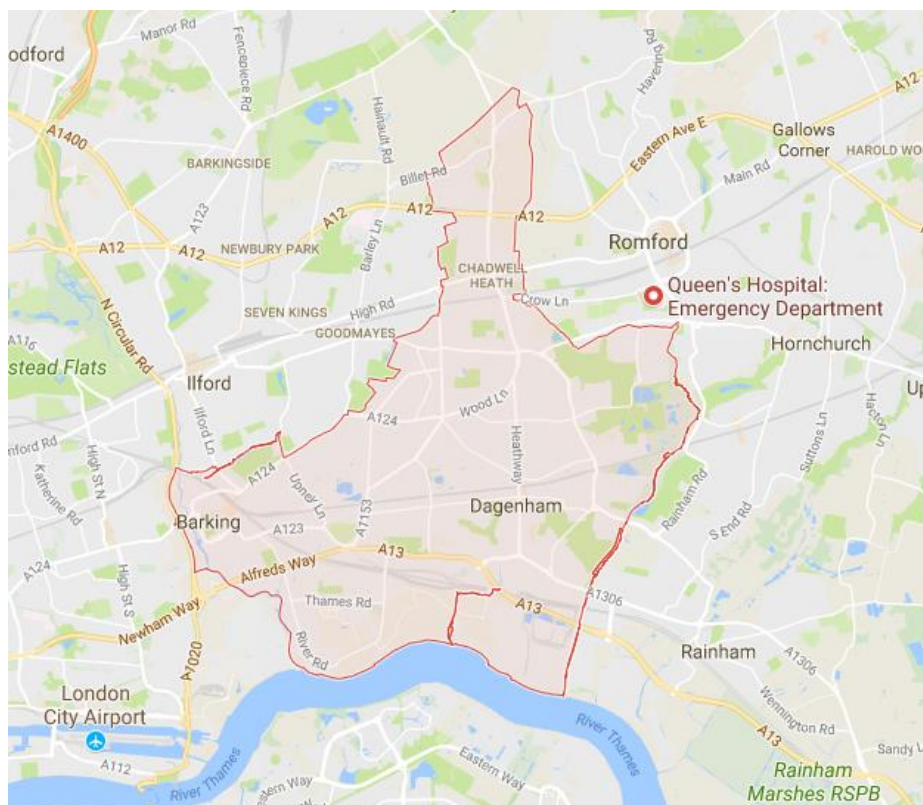
This document shows traffic noise maps for parks in the borough. The noise maps are taken from <http://www.extrium.co.uk/noiseviewer.html>. Occasionally, google earth or google map images are included to help the reader identify where the park is located.

Similar documents are available for all London Boroughs. These were created as part of research into the impact of traffic noise in London's parks. They should be read in conjunction with the main report and data analysis which are available at <http://www.cprelondon.org.uk/resources/item/2390-noiseinparks>.

The key to the traffic noise maps is shown here to the right. Orange denotes noise of 55 decibels (dB). Louder noises are denoted by reds and blues with dark blue showing the loudest. Where the maps appear with no colour and are just grey, this means there is no traffic noise of 55dB or above.

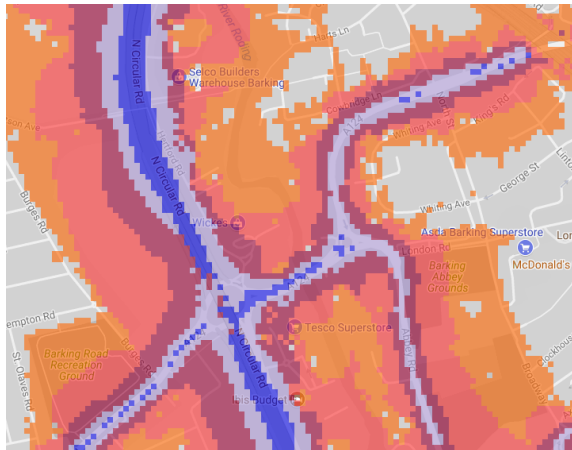
Average noise level (dB)

Blue	75.0 and over
Dark Blue	70.0 - 74.9
Red	65.0 - 69.9
Orange	60.0 - 64.9
Light Orange	55.0 - 59.9

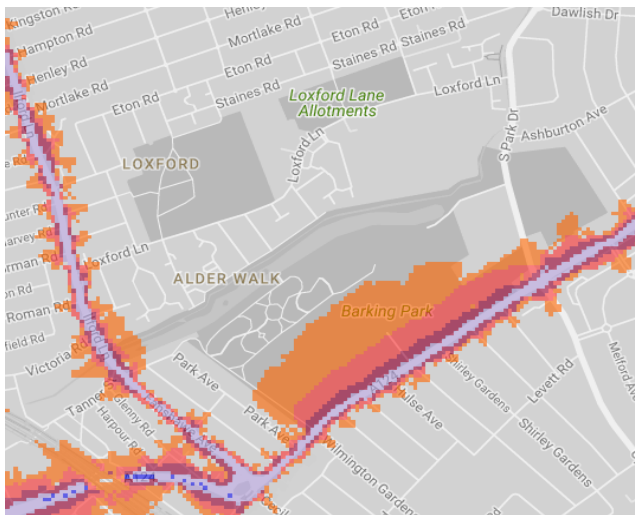


London Borough of Barking & Dagenham

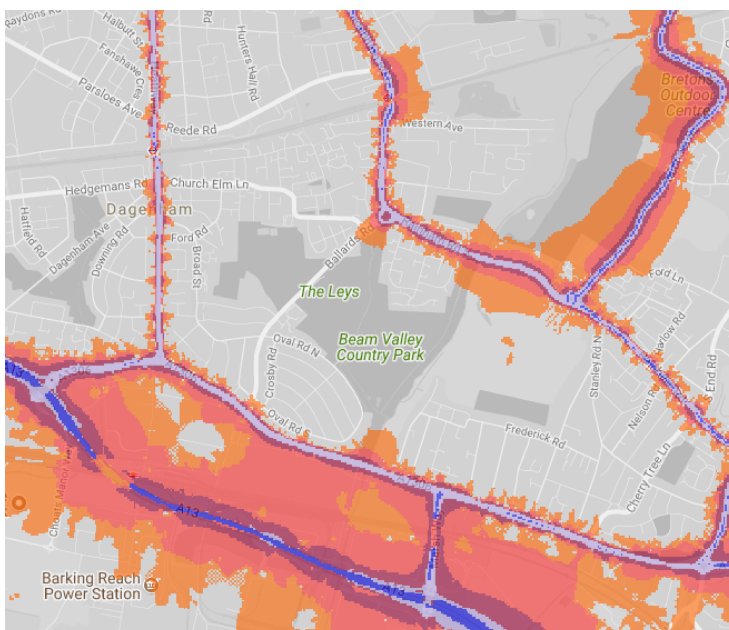
1. Barking Abbey Grounds /Abbey Green



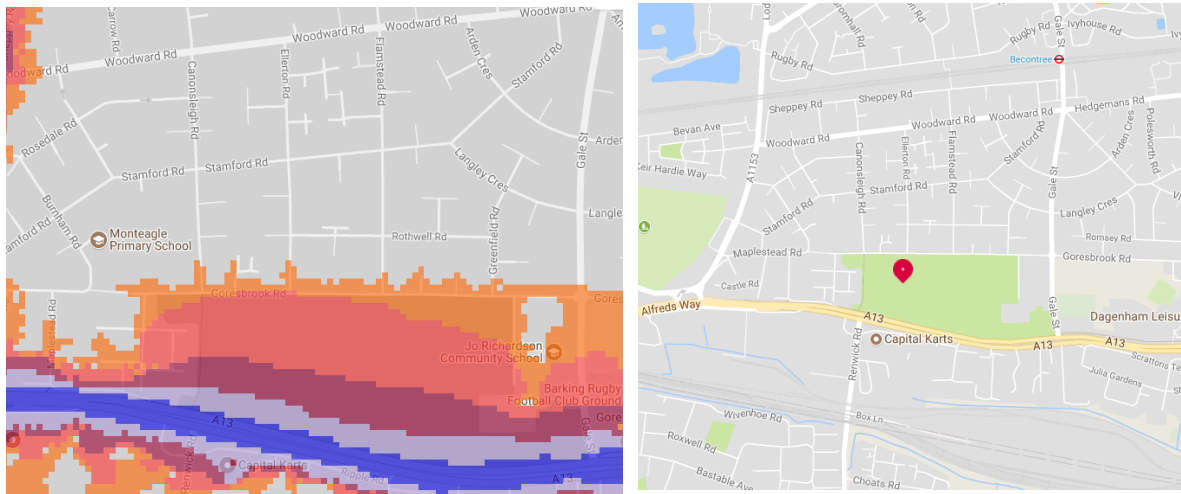
2. Barking Park



3. Beam Valley Country Park / The Leys

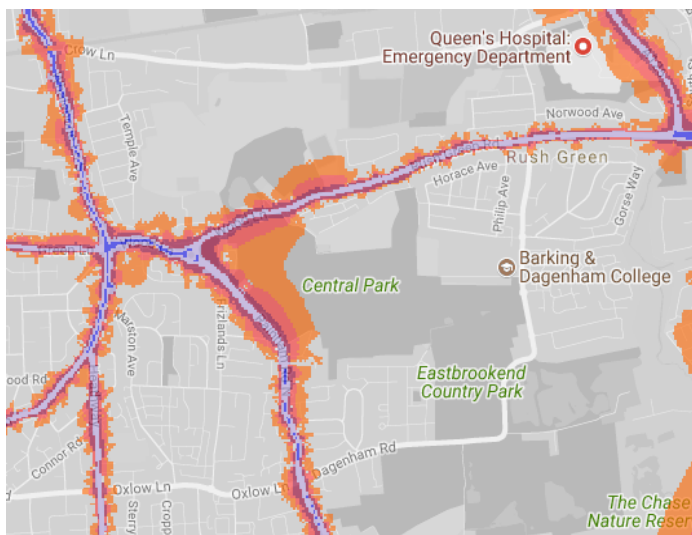


4. Castle Green (Goresbrook Road)

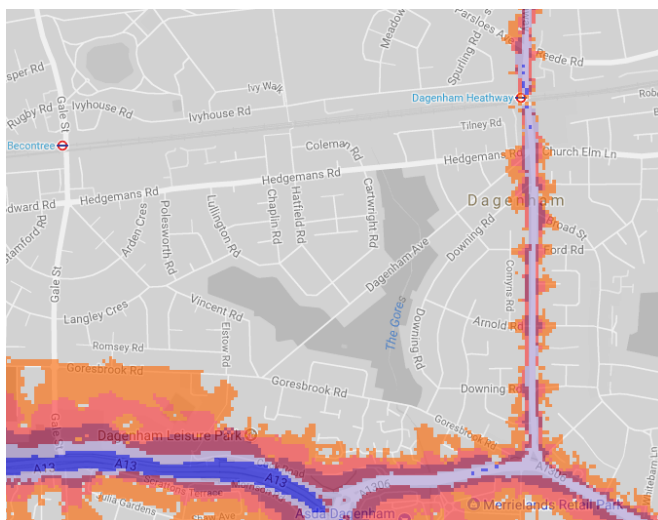


5. Central Park

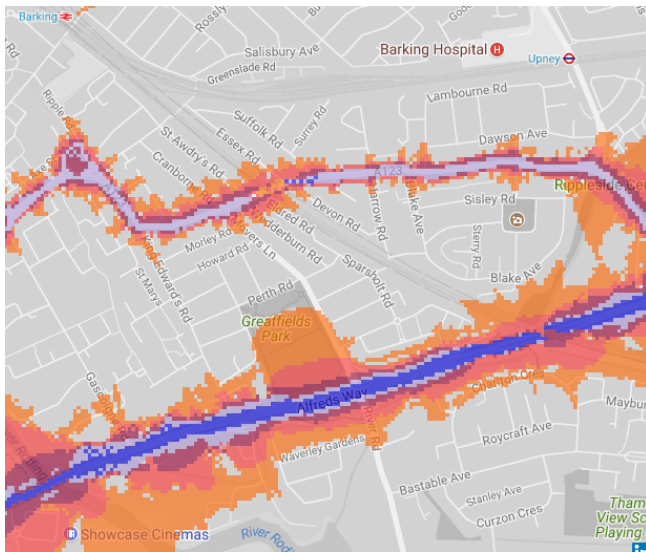
6. Eastbrookend country Park



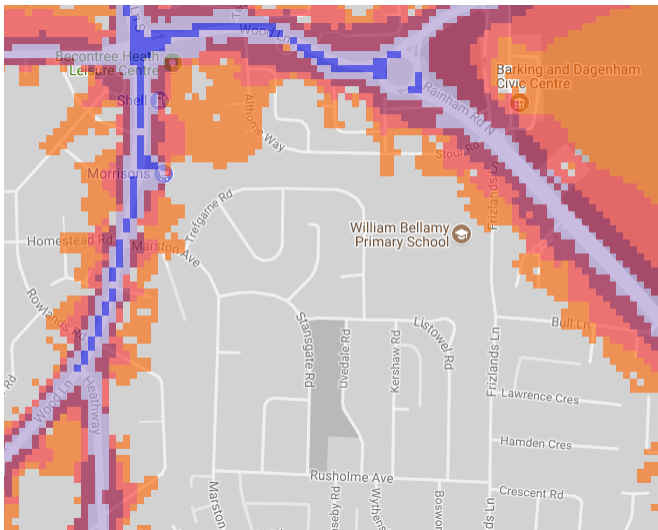
7. Goresbrook Park



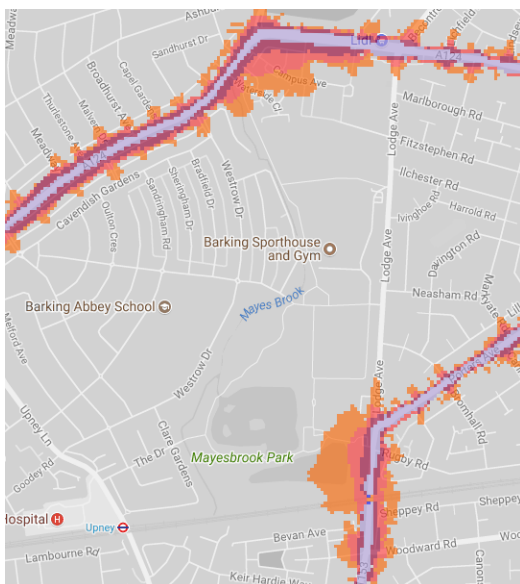
8. Greatfields Park



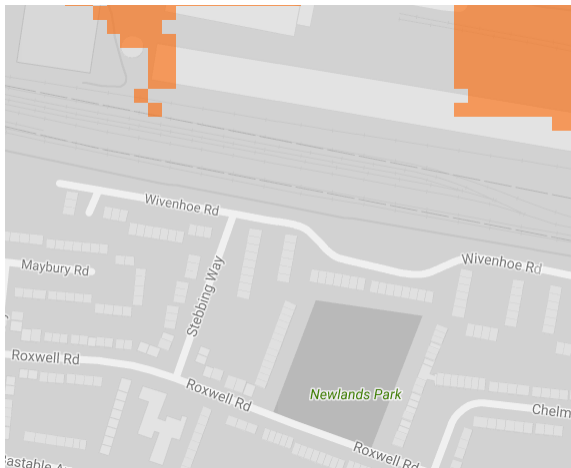
9. Heath Park Open Space (Stansgate road)



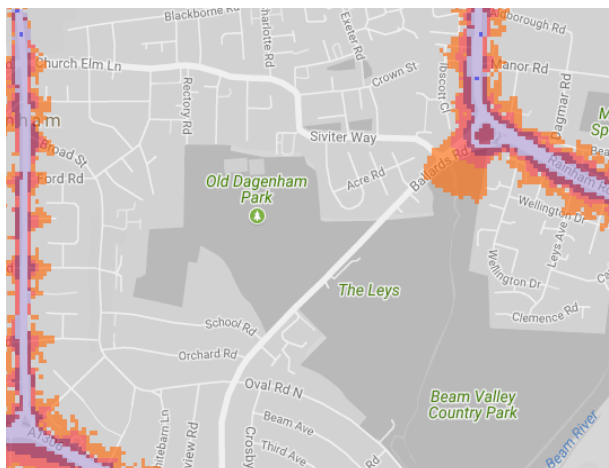
10. Mayesbrook Park



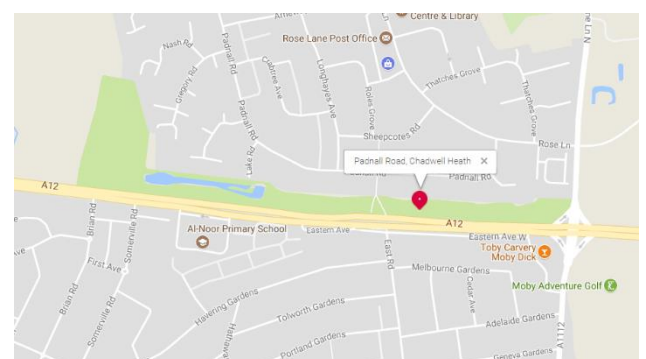
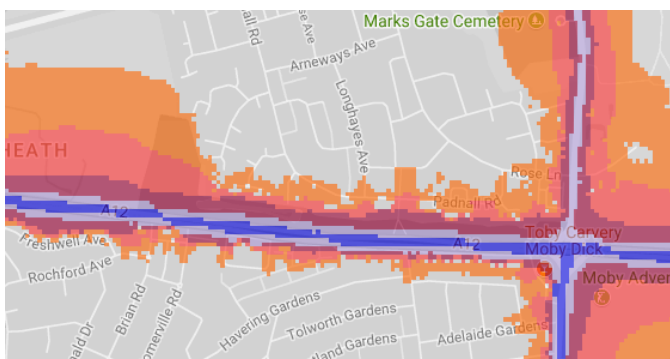
11. Newlands Park



12. Old Dagenham Park



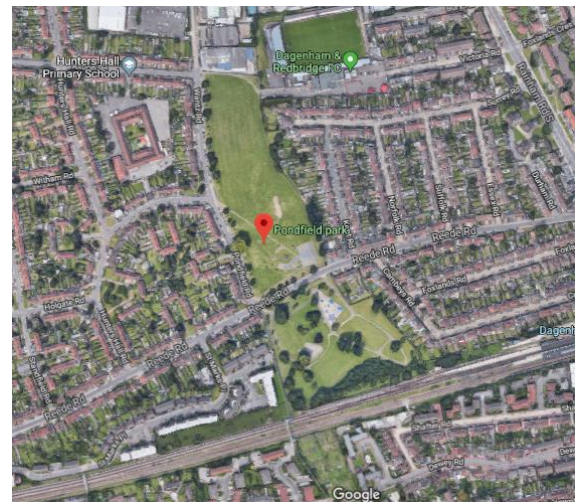
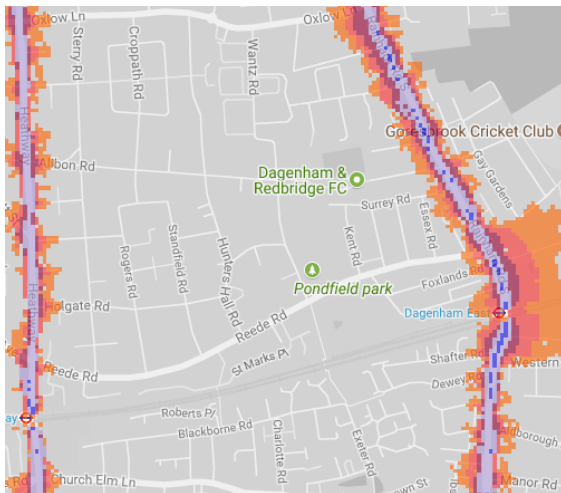
13. Padnall open space



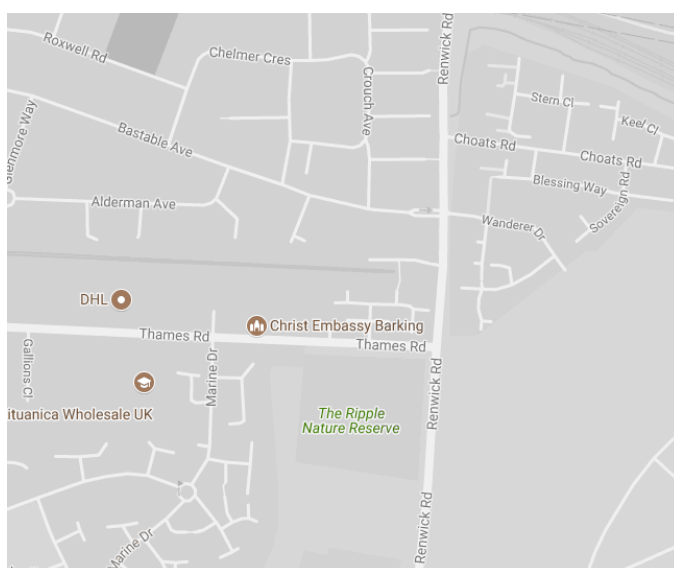
14. Parsloes Park



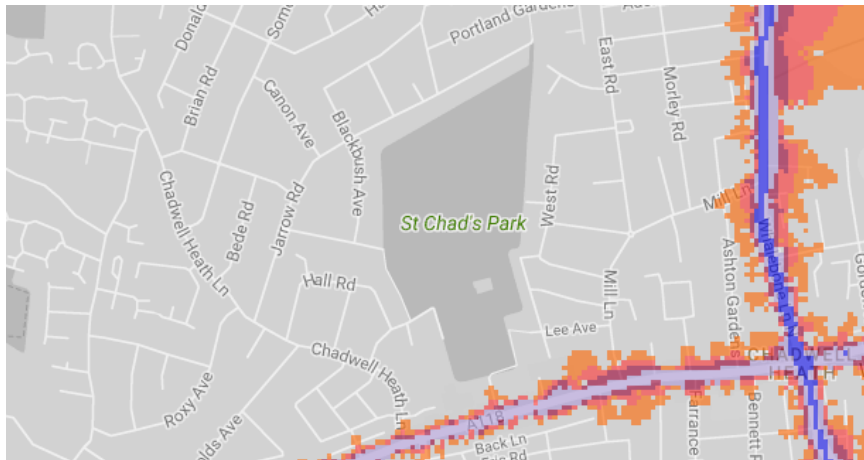
15. Pondfield Park



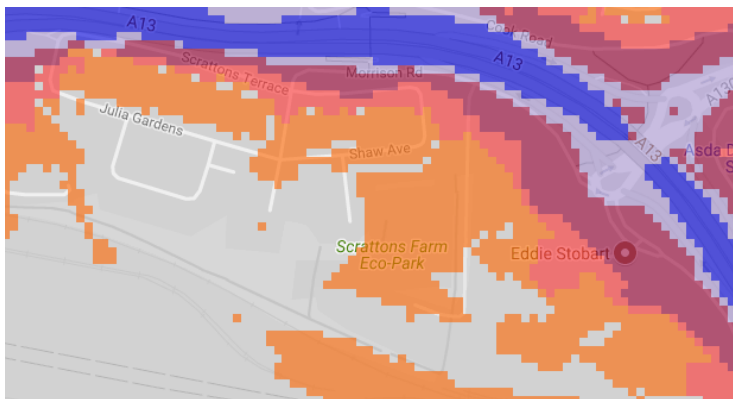
16. The Ripple Nature Reserve



17. St Chad's Park



18. Scrattons Farm Eco Park



19. Valence Park

